

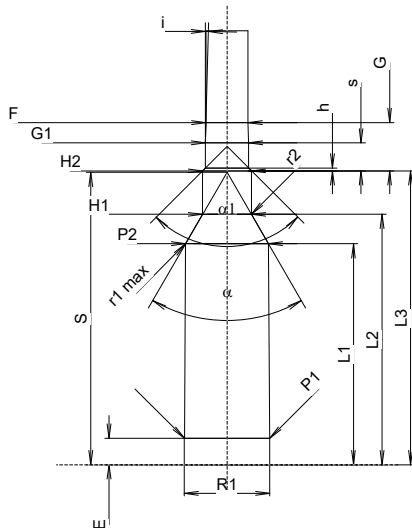
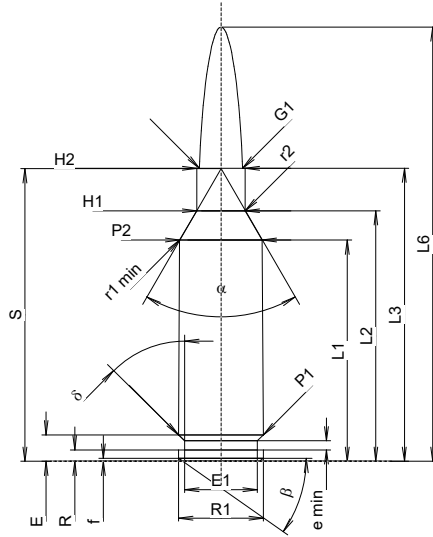
C.I.P.

22 Advanced Rifle Cartridge

TAB.	I
Date	24-05-14
Revision	

Country of Origin: US

Alternative Names: 22 ARC



Scale 1:1

Dimensions in << mm >>
Dimensions and Tolerances for Proof Barrels
see Appendix CR 1.

CARTRIDGE MAXI

Lengths

L1 ¹⁾	=	29.24	-0.20
L2 ¹⁾	=	33.12	-0.20
L3 ¹⁾	=	38.74	
L4	=		
L5	=		
L6	=	57.40	

Case Head

R	=	1.50	
R1	=	11.20	
R3	=		
E	=	3.49	
E1	=	9.60	
e min	=	1.19	
delta	=	45°	
f	=	0.38	
beta	=	35°	

Powder Chamber

P1	=	11.22	
P2 ¹⁾ *	=	10.92	-0.20

Junction Cone

alpha *	=	60°	
S *	=	38.68	
r1 min	=	0.76	
r2	=	3.18	

Collar

H1 *	=	6.43	
H2 ¹⁾	=	6.43	

Projectile

G1 ¹⁾	=	5.70	
G2	=		
F	=		
L3+G ¹⁾	=	45.12	

Pressures (Energies)

Method Transducer

Pmax	=	4050 bar	
PK	=	4658 bar	
PE	=	5063 bar	
M	=	17.50	
EE	=	2250 Joule	

Miscellaneous Dimensions

Fe ¹⁾³⁾	=	0.10	
delta L	=		

CHAMBER MINI

Lengths

L1	=	29.22	
L2	=	33.10	
L3 ¹⁾	=	38.86	

Breech

R	=		
R1	=	11.31	
R2	=		
R3	=		
r	=		

Powder Chamber

E	=	3.49	
P1 ¹⁾	=	11.26	
P2 *	=	10.94	

Junction Cone

alpha ¹⁾ *	=	60°	
S *	=	38.67	
r1 max	=	0.76	
r2	=	3.18	

Collar

H1 *	=	6.45	
H2 ¹⁾	=	6.45	

Commencement of Rifling

G1 ¹⁾ *	=	5.70	
G ¹⁾	=	6.38	
alpha1 *	=	90°	
h	=	0.37	
s	=	3.71	
i ¹⁾ *	=	1°30'	
w	=		

Barrel

F ¹⁾ *	=	5.56	
Z ¹⁾	=	5.69	

Grooves

b	=	1.88	
N	=	6	
u	=	177.80	
Q	=	25.00	mm ²

Notes: 1) Check for safety reasons
3) Headspace on Shoulder
* Basic dimensions