

**C.I.P.****284 Tony**

TAB.

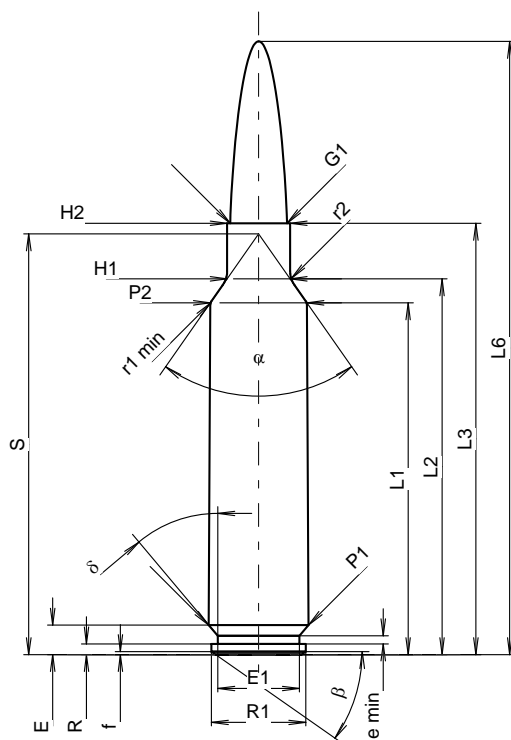
I

Datum

16-10-18

Revision

Ursprungsland: IT

**PATRONE MAXI****Längen**

L1 <sup>1)</sup>	=	44.74	-0.20
L2 <sup>1)</sup>	=	47.80	-0.20
L3 <sup>1)</sup>	=	54.87	
L4	=		
L5	=		
L6	=	78.00	

**Hülsenboden**

R	=	1.37	
R1	=	12.01	
R3	=		
E	=	3.76	
E1	=	10.39	
e min	=	1.02	
delta	=	40°	
f	=	0.38	
beta	=	35°	

**Pulverkammer**

P1	=	12.69	
P2 <sup>1)</sup> *	=	12.29	-0.20

**Schulterkonus**

alpha *	=	70°	
S *	=	53.51	
r1 min	=	0.76	
r2	=	3.17	

**Hülsenhals**

H1 *	=	8.00	
H2 <sup>1)</sup>	=	8.00	

**Geschoss**

G1 <sup>1)</sup>	=	7.21	
G2	=		
F	=		
L3+G <sup>1)</sup>	=	60.58	

**Drücke (Energien)****Mech. elektr. Wandler**

Pmax	=	4400 bar	
PK	=	5060 bar	
PE	=	5500 bar	
M	=	25.00	
EE	=	4300 Joule	

**Verschiedene Daten**

Fe <sup>1)3)</sup>	=	0.10	
delta L	=		

**PATRONENLAGER MINI****Längen**

L1	=	44.79	
L2	=	47.84	
L3 <sup>1)</sup>	=	54.99	

**Stoßboden**

R	=		
R1	=	12.92	
R2	=		
R3	=		
r	=		

**Pulverkammer**

E	=	3.76	
P1 <sup>1)</sup>	=	12.77	
P2 *	=	12.32	

**Schulterkonus**

alpha <sup>1)</sup> *	=	70°	
S *	=	53.59	
r1 max	=	0.76	
r2	=	3.17	

**Hülsenhals**

H1 *	=	8.05	
H2 <sup>1)</sup>	=	8.05	

**Geschossübergang**

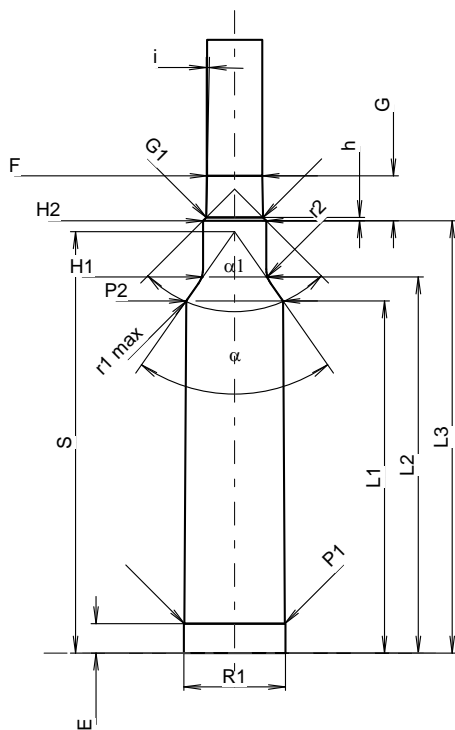
G1 <sup>1)</sup> *	=	7.23	
G <sup>1)</sup>	=	5.71	
alpha 1	=	90°	
h *	=	0.41	
s	=		
i <sup>1)</sup> *	=	1°11'20"	
w	=		

**Lauf**

F <sup>1)</sup> *	=	7.01	
Z <sup>1)</sup>	=	7.21	

**Züge**

b	=	2.79	
N	=	4	
u	=	228.00	
Q	=	39.74	mm <sup>2</sup>



Maßstab 1.04:1

Maße in << mm >>  
Maße und Toleranzen für Messläufe  
siehe Anhang CR1.

Bemerkungen: 1) Kontrolle aus Sicherheitsgründen  
3) Verschlussabstand an Schulter  
\* Grundmaße