

**C.I.P.****300 AAC Blackout**

TAB.

I

Datum

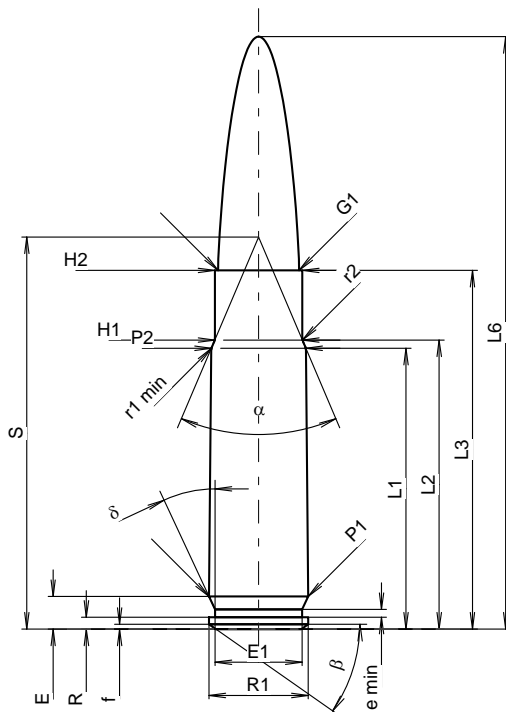
15-05-19

Revision

18-10-17

Ursprungsland: US

Alternative Namen: 300 Whisper, 300 BLK, 7,62 x 35

**PATRONE MAXI****Längen**

L1 <sup>1)</sup>	=	27.20	-0.20
L2 <sup>1)</sup>	=	28.00	-0.20
L3 <sup>1)</sup>	=	34.75	
L4	=		
L5	=		
L6	=	57.40	

**Hülsenboden**

R	=	1.14	
R1	=	9.60	
R3	=		
E	=	3.15	
E1	=	8.43	
e min	=	0.76	
delta	=	25°	
f	=	0.45	
beta	=	35°	

**Pulverkammer**

P1	=	9.60	
P2 <sup>1)</sup> *	=	9.16	-0.20

**Schulterkonus**

alpha <sup>*</sup>	=	46°	
S <sup>*</sup>	=	37.99	
r1 min	=	0.64	
r2	=	1.27	

**Hülsenhals**

H1 <sup>*</sup>	=	8.48	
H2 <sup>1)</sup>	=	8.48	

**Geschoss**

G1 <sup>1)</sup>	=	7.85	
G2	=		
F	=	7.62	
L3+G <sup>1)</sup>	=	43.89	

**Drücke (Energien)****Mech. elektr. Wandler**

Pmax	=	3900 bar	
PK	=	4485 bar	
PE	=	4875 bar	
M	=	17.50	
EE	=	2000 Joule	

**Verschiedene Daten**

Fe <sup>1)3)</sup>	=	0.10	
delta L	=	0.08	

**PATRONENLAGER MINI****Längen**

L1	=	27.09	
L2	=	27.83	
L3 <sup>1)</sup>	=	35.00	

**Stoßboden**

R	=		
R1	=	9.66	
R2	=		
R3	=		
r	=		

**Pulverkammer**

E	=	3.15	
P1 <sup>1)</sup>	=	9.62	
P2 <sup>*</sup>	=	9.19	

**Schulterkonus**

alpha <sup>1)</sup> *	=	46°	
S <sup>*</sup>	=	37.91	
r1 max	=	0.64	
r2	=	1.27	

**Hülsenhals**

H1 <sup>*</sup>	=	8.56	
H2 <sup>1)</sup>	=	8.51	

**Geschossübergang**

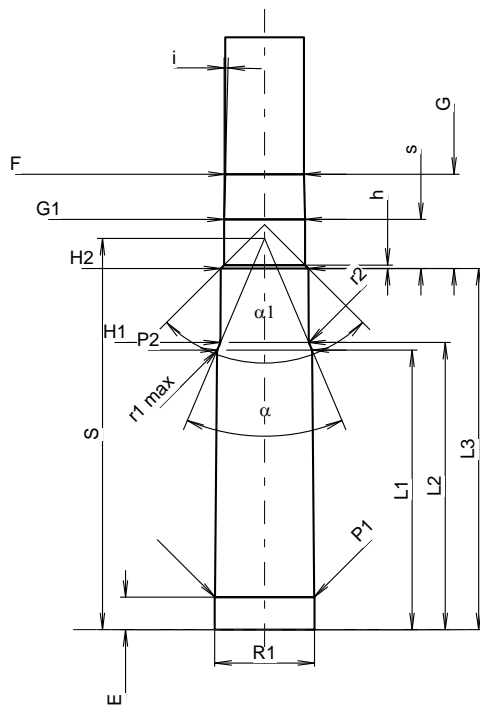
G1 <sup>1)</sup> *	=	7.85	
G <sup>1)</sup>	=	9.14	
alpha l	=	90°	
h	=	0.33	
s <sup>*</sup>	=	4.75	
i <sup>1)</sup> *	=	1°30'	
w	=		

**Lauf**

F <sup>1)</sup> *	=	7.62	
Z <sup>1)</sup>	=	7.82	

**Züge**

b	=	4.52	
N	=	4	
u	=	203.20	
Q	=	47.54	mm <sup>2</sup>



Maßstab 1.37:1

Maße in << mm >>  
Maße und Toleranzen für Messläufe  
siehe Anhang CR1.

Bemerkungen: 1) Kontrolle aus Sicherheitsgründen  
3) Verschlussabstand an Schulter  
\* Grundmaße