

C.I.P.**350 Rigby Mag.**

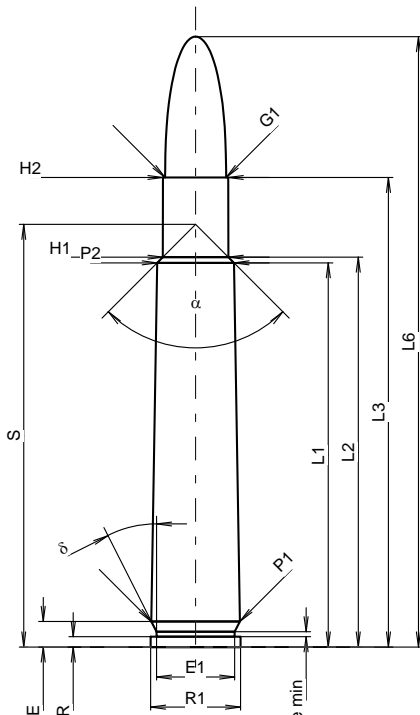
TAB. I

Datum 84-06-14

Revision 20-11-10

Ursprungsland: GB

Alternative Namen: 350 Mag. Rigby

**PATRONE MAXI****Längen**

L1 ¹⁾ *	=	57.15	-0.20
L2 ¹⁾ *	=	57.99	-0.20
L3 ¹⁾	=	69.85	
L4	=		
L5	=		
L6	=	90.80	

Hülsenboden

R	=	1.52	
R1	=	13.36	
R3	=		
E	=	3.81	
E1	=	11.61	
e min	=	0.76	
delta	=	26°51'36"	
f	=		
beta	=		

Pulverkammer

P1	=	13.16	
P2 ¹⁾ *	=	11.43	-0.20

Schulterkonus

alpha	=	90°	
S	=	62.87	
r1 min	=		
r2	=		

Hülsenhals

H1 *	=	9.75	
H2 ¹⁾	=	9.73	

Geschoss

G1 ¹⁾	=	9.07	
G2	=		
F	=		
L3+G ¹⁾	=	74.74	

Drücke (Energien)**Mech. elektr. Wandler**

Pmax	=	3100 bar	
PK	=	3565 bar	
PE	=	3875 bar	
M	=	25.00	
EE	=	4810 Joule	

Verschiedene Daten

Fe ¹⁾³⁾	=	0.15	
delta L	=	0.04	

PATRONENLAGER MINI**Längen**

L1 *	=	57.10	
L2 *	=	57.94	
L3 ¹⁾	=	70.15	

Stoßboden

R	=	1.52	
R1	=	13.41	
R2	=		
R3	=		
r	=		

Pulverkammer

E	=	3.81	
P1 ¹⁾	=	13.18	
P2 *	=	11.46	

Schulterkonus

alpha ¹⁾	=	90°	
S	=	62.83	
r1 max	=		
r2	=		

Hülsenhals

H1 *	=	9.78	
H2 ¹⁾	=	9.75	

Geschossübergang

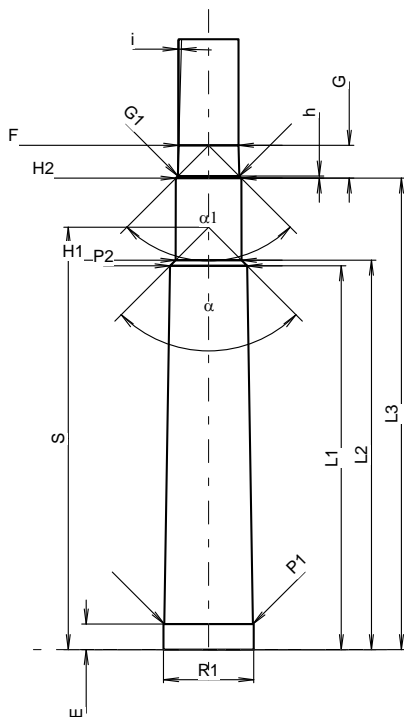
G1 ¹⁾ *	=	9.13	
G ¹⁾ *	=	4.89	
alpha1	=	90°	
h *	=	0.31	
s	=		
i ¹⁾ *	=	1°30'	
w	=		

Lauf

F ¹⁾ *	=	8.89	
Z ¹⁾	=	9.06	

Züge

b	=	2.79	
N	=	6	
u	=	305.00	
Q	=	63.52	mm ²



Maßstab 1:1.12

Maße in << mm >>
Maße und Toleranzen für Messläufe
siehe Anhang CR 1.

Bemerkungen: 1) Kontrolle aus Sicherheitsgründen
3) Verschlussabstand an Schulter
* Grundmaße