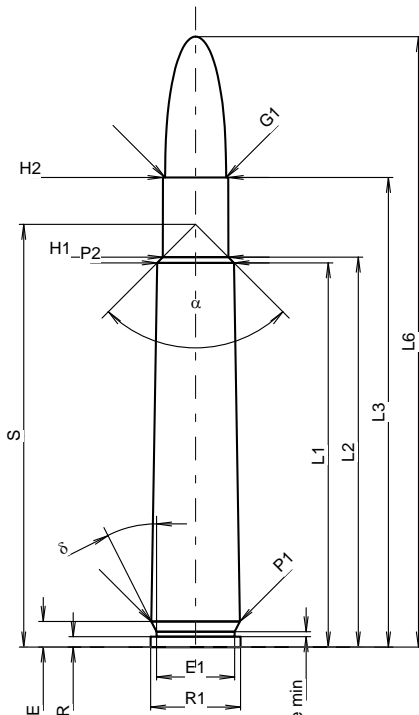


**C.I.P.****350 Rigby Mag.**

Country of Origin: GB

<b>TAB.</b>	<b>I</b>
<b>Date</b>	<b>84-06-14</b>
<b>Revision</b>	<b>20-11-10</b>

Alternative Names: 350 Mag. Rigby

**CARTRIDGE MAXI****Lengths**

L1 <sup>1)</sup> *	=	57.15	-0.20
L2 <sup>1)</sup> *	=	57.99	-0.20
L3 <sup>1)</sup>	=	69.85	
L4	=		
L5	=		
L6	=	90.80	

**Case Head**

R	=	1.52	
R1	=	13.36	
R3	=		
E	=	3.81	
E1	=	11.61	
e min	=	0.76	
delta	=	26°51'36"	
f	=		
beta	=		

**Powder Chamber**

P1	=	13.16	
P2 <sup>1)</sup> *	=	11.43	-0.20

**Junction Cone**

alpha	=	90°	
S	=	62.87	
r1 min	=		
r2	=		

**Collar**

H1 *	=	9.75	
H2 <sup>1)</sup>	=	9.73	

**Projectile**

G1 <sup>1)</sup>	=	9.07	
G2	=		
F	=		
L3+G <sup>1)</sup>	=	74.74	

**Pressures (Energies)****Method Transducer**

Pmax	=	3100 bar	
PK	=	3565 bar	
PE	=	3875 bar	
M	=	25.00	
EE	=	4810 Joule	

**Miscellaneous Dimensions**

Fe <sup>1)3)</sup>	=	0.15	
delta L	=	0.04	

**CHAMBER MINI****Lengths**

L1 *	=	57.10	
L2 *	=	57.94	
L3 <sup>1)</sup>	=	70.15	

**Breech**

R	=	1.52	
R1	=	13.41	
R2	=		
R3	=		
r	=		

**Powder Chamber**

E	=	3.81	
P1 <sup>1)</sup>	=	13.18	
P2 *	=	11.46	

**Junction Cone**

alpha <sup>1)</sup>	=	90°	
S	=	62.83	
r1 max	=		
r2	=		

**Collar**

H1 *	=	9.78	
H2 <sup>1)</sup>	=	9.75	

**Commencement of Rifling**

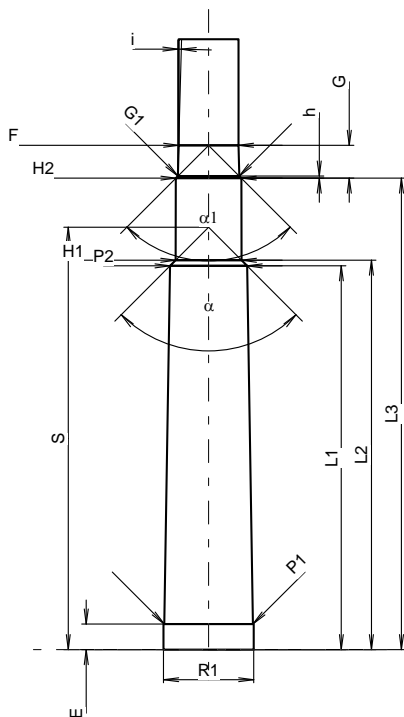
G1 <sup>1)</sup> *	=	9.13	
G <sup>1)</sup> *	=	4.89	
alpha1	=	90°	
h *	=	0.31	
s	=		
i <sup>1)</sup> *	=	1°30'	
w	=		

**Barrel**

F <sup>1)</sup> *	=	8.89	
Z <sup>1)</sup>	=	9.06	

**Grooves**

b	=	2.79	
N	=	6	
u	=	305.00	
Q	=	63.52	mm <sup>2</sup>



Scale 1:1.12

Dimensions in << mm >>  
Dimensions and Tolerances for Proof Barrels  
see Appendix CR 1.

Notes: 1) Check for safety reasons  
3) Headspace on Shoulder  
\* Basic dimensions