

C.I.P.**400 Legend**

TAB.

I

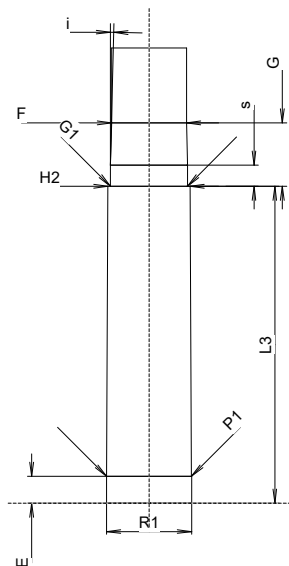
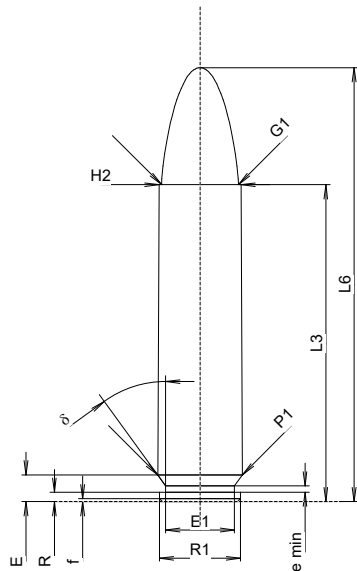
Datum

23-11-08

Ursprungsland: US

Revision

Alternative Namen: 400 LGND

**PATRONE MAXI****Längen**

L1	=		
L2	=		
L3 ¹⁾	=	41.91	-0.25
L4	=		
L5	=		
L6	=	57.40	

Hülsenboden

R	=	1.24	
R1	=	10.72	
R3	=		
E	=	3.53	
E1	=	9.09	
e min	=	0.84	
delta	=	36°	
f	=	0.38	
beta	=	0°	

Pulverkammer

P1	=	11.19	
P2	=		

Schulterkonus

alpha	=		
S	=		
r1 min	=		
r2	=		

Hülsenhals

H1	=		
H2 ¹⁾	=	10.84	

Geschoss

G1 ¹⁾	=	10.17	
G2	=		
F	=		
L3+G ¹⁾	=	50.28	

Drücke (Energien)**Mech. elektr. Wandler**

Pmax	=	3180 bar	
PK	=	3657 bar	
PE	=	3975 bar	
M	=		
EE	=	3200 Joule	

Verschiedene Daten

Fe	=	0.15	
delta L	=		

PATRONENLAGER MINI**Längen**

L1	=		
L2	=		
L3 ¹⁾	=	41.91	

Stoßboden

R	=		
R1	=	11.25	
R2	=		
R3	=		
r	=		

Pulverkammer

E	=	3.53	
P1 ¹⁾	=	11.21	
P2	=		

Schulterkonus

alpha	=		
S	=		
r1 max	=		
r2	=		

Hülsenhals

H1	=		
H2 ¹⁾	=	10.86	

Geschossübergang

G1 ¹⁾ *	=	10.20	
G ¹⁾ *	=	8.37	
alpha1	=		
h	=		
s *	=	2.79	
i ¹⁾ *	=	1°30'	
w	=		

Lauf

F ¹⁾ *	=	9.91	
Z ¹⁾	=	10.17	

Züge

b	=	3.05	
N	=	6	
u	=	406.40	
Q	=	79.55	mm ²

Maßstab 1:1

Maße in << mm >>
Maße und Toleranzen für Messläufe
siehe Anhang 1.

Bemerkungen: 1) Kontrolle aus Sicherheitsgründen
* Grundmaße