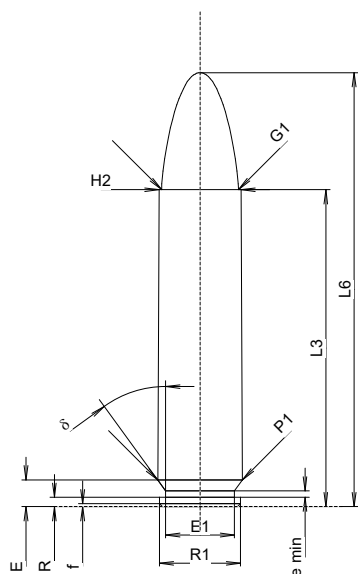


C.I.P.**400 Legend**

TAB.	I
Date	23-11-08
Révision	

Pays d'origine: US

Marquage alternatif: 400 LGND

**CARTOUCHE MAXI****Longueurs**

L1	=		
L2	=		
L3 ¹⁾	=	41.91	-0.25
L4	=		
L5	=		
L6	=	57.40	

Culot

R	=	1.24	
R1	=	10.72	
R3	=		
E	=	3.53	
E1	=	9.09	
e min	=	0.84	
delta	=	36°	
f	=	0.38	
beta	=	0°	

Chambre à poudre

P1	=	11.19	
P2	=		

Cône de raccordement

alpha	=		
S	=		
r1 min	=		
r2	=		

Collet

H1	=		
H2 ¹⁾	=	10.84	

Projectile

G1 ¹⁾	=	10.17	
G2	=		
F	=		
L3+G ¹⁾	=	50.28	

Pressions (Énergies)**Méthode transducteur**

Pmax	=	3180 bar	
PK	=	3657 bar	
PE	=	3975 bar	
M	=		
EE	=	3200 Joule	

Autres indications

Fe	=	0.15	
delta L	=		

CHAMBRE MINI**Longueurs**

L1	=		
L2	=		
L3 ¹⁾	=	41.91	

Cuvette

R	=		
R1	=	11.25	
R2	=		
R3	=		
r	=		

Chambre à poudre

E	=	3.53	
P1 ¹⁾	=	11.21	
P2	=		

Cône de raccordement

alpha	=		
S	=		
r1 max	=		
r2	=		

Collet

H1	=		
H2 ¹⁾	=	10.86	

Prise de rayures

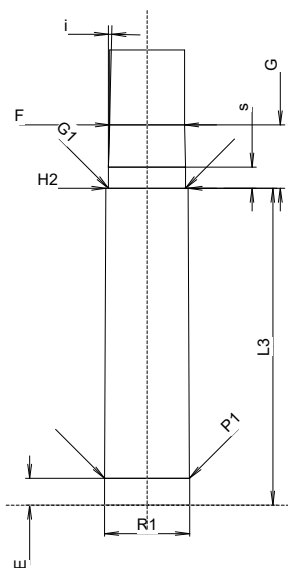
G1 ¹⁾ *	=	10.20	
G ¹⁾ *	=	8.37	
alpha1	=		
h	=		
s*	=	2.79	
i ¹⁾ *	=	1°30'	
w	=		

Canon

F ¹⁾ *	=	9.91	
Z ¹⁾	=	10.17	

Rayures

b	=	3.05	
N	=	6	
u	=	406.40	
Q	=	79.55	mm ²



Échelle 1:1

Dimensions en << mm >>
Dimensions et tolérances pour les canons
d'épreuve: Voyez Annexe 1.

Notes: 1) A' contrôler pour la sécurité
* Dimensions de base