

C.I.P.**458 SOCOM**

TAB.

I

Datum

20-04-21

Revision

21-11-09

Ursprungsland: US

PATRONE MAXI**Längen**

L1 ^{1)*}	=	29.91	-0.20
L2 ^{1)*}	=	31.15	-0.20
L3 ¹⁾	=	40.13	
L4	=		
L5	=		
L6	=	57.15	

Hülsenboden

R	=	1.32	
R1	=	12.01	
R3	=		
E	=	4.35	
E1	=	10.34	
e min	=	1.40	
δ	=	47°	
f	=	0.30	
β	=	55°	

Pulverkammer

P1 ^{1)*}	=	13.83	
P2	=	13.56	-0.20

Schulterkonus

α	=	50°	
S	=	44.45	
r1 min	=	0.76	
r2	=	1.27	

Hülsenhals

H1 *	=	12.40	
H2 ^{1)*}	=	12.34	

Geschoss

G1 ¹⁾	=	11.63	
G2	=		
F	=		
L3+G ¹⁾	=	46.16	

Drücke (Energien)**Mech. elektr. Wandler**

Pmax	=	2400 bar	
PK	=	2760 bar	
PE	=	3000 bar	
M	=	17.50	
EE	=	3100 Joule	

Verschiedene Daten

Fe ¹⁾³⁾	=	0.15	
delta L	=	0.09	

PATRONENLAGER MINI**Längen**

L1 *	=	29.73	
L2 *	=	31.04	
L3 ¹⁾	=	40.39	

Stoßboden

R	=		
R1	=	12.05	
R2	=		
R3	=		
r	=		

Pulverkammer

E	=	4.35	
P1 ¹⁾	=	13.85	
P2 *	=	13.64	

Schulterkonus

α ¹⁾	=	50°	
S	=	44.36	
r1 max	=	0.50	
r2	=	1.27	

Hülsenhals

H1 *	=	12.42	
H2 ¹⁾	=	12.40	

Geschossübergang

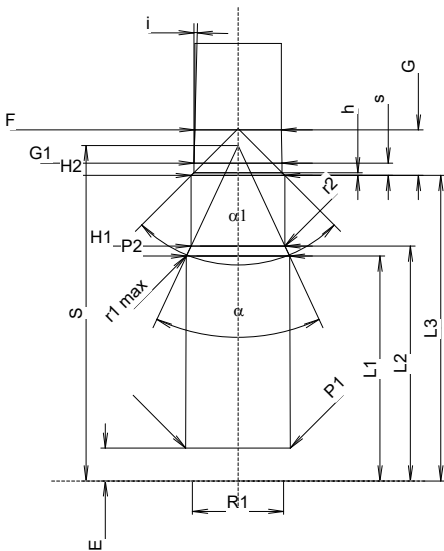
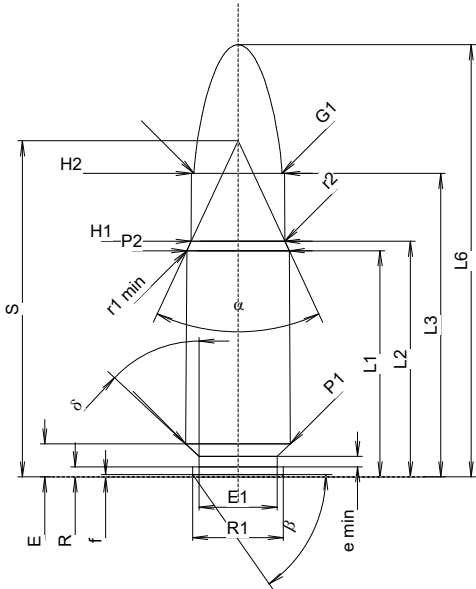
G1 ^{1)*}	=	11.66	
G ^{1)*}	=	6.03	
α1	=	90°	
h	=	0.37	
s	=	1.64	
i ¹⁾	=	1°30'	
w	=		

Lauf

F ^{1)*}	=	11.43	
Z ¹⁾	=	11.63	

Züge

b	=	3.81	
N	=	6	
u	=	355.60	
Q	=	104.94	mm ²



Maßstab 1:1

Maße in << mm >>
Maße und Toleranzen für Messläufe
siehe Anhang CR1.

Bemerkungen: 1) Kontrolle aus Sicherheitsgründen
3) Verschlussabstand an Schulter
* Grundmaße