

C.I.P.**458 SOCOM**

TAB.

I

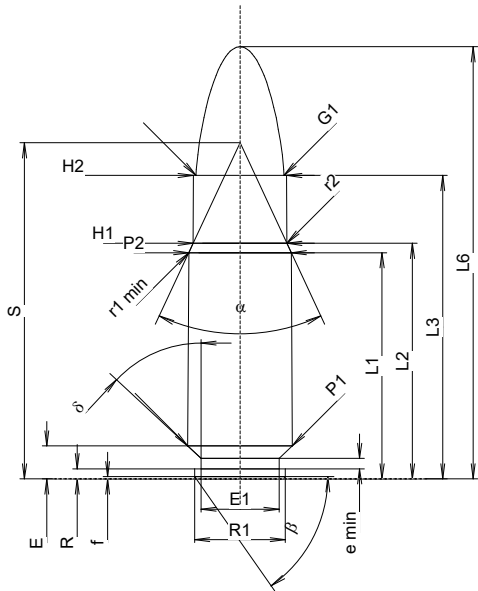
Date

20-04-21

Revision

21-11-09

Country of Origin: US

**CARTRIDGE MAXI****Lengths**

L1 1)*	=	29.91	-0.20
L2 1)*	=	31.15	-0.20
L3 1)	=	40.13	
L4	=		
L5	=		
L6	=	57.15	

Case Head

R	=	1.32	
R1	=	12.01	
R3	=		
E	=	4.35	
E1	=	10.34	
e min	=	1.40	
delta	=	47°	
f	=	0.30	
beta	=	55°	

Powder Chamber

P1 1)*	=	13.83	
P2	=	13.56	-0.20

Junction Cone

alpha	=	50°	
S	=	44.45	
r1 min	=	0.76	
r2	=	1.27	

Collar

H1 *	=	12.40	
H2 1)*	=	12.34	

Projectile

G1 1)	=	11.63	
G2	=		
F	=		
L3+G 1)	=	46.16	

Pressures (Energies)**Method Transducer**

Pmax	=	2400 bar	
PK	=	2760 bar	
PE	=	3000 bar	
M	=	17.50	
EE	=	3100 Joule	

Miscellaneous Dimensions

Fe 1)3)	=	0.15	
delta L	=	0.09	

CHAMBER MINI**Lengths**

L1 *	=	29.73	
L2 *	=	31.04	
L3 1)	=	40.39	

Breech

R	=		
R1	=	12.05	
R2	=		
R3	=		
r	=		

Powder Chamber

E	=	4.35	
P1 1)	=	13.85	
P2 *	=	13.64	

Junction Cone

alpha 1)	=	50°	
S	=	44.36	
r1 max	=	0.50	
r2	=	1.27	

Collar

H1 *	=	12.42	
H2 1)	=	12.40	

Commencement of Rifling

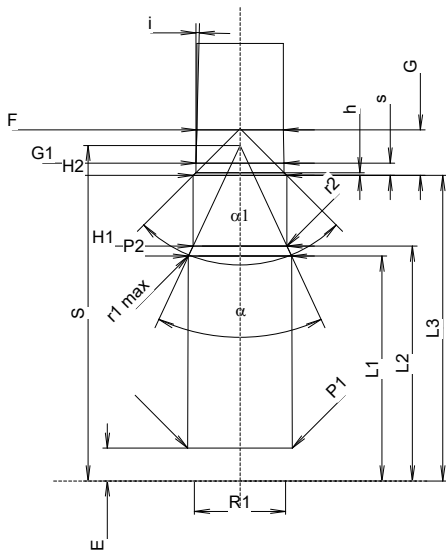
G1 1)*	=	11.66	
G 1)*	=	6.03	
alpha1	=	90°	
h	=	0.37	
s	=	1.64	
i 1)	=	1°30'	
w	=		

Barrel

F 1)*	=	11.43	
Z 1)	=	11.63	

Grooves

b	=	3.81	
N	=	6	
u	=	355.60	
Q	=	104.94	mm ²



Scale 1:1

Dimensions in << mm >>
Dimensions and Tolerances for Proof Barrels
see Appendix CR1.

Notes: 1) Check for safety reasons
3) Headspace on Shoulder
* Basic dimensions