

C.I.P.**6,5 G.A.P. 4S**

TAB.

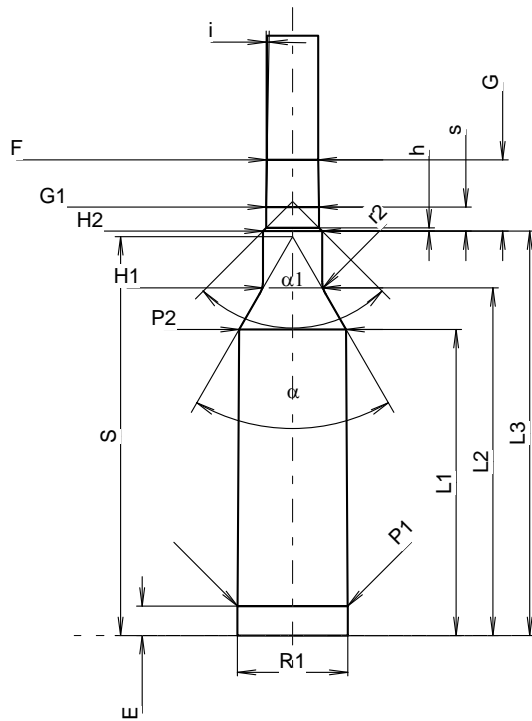
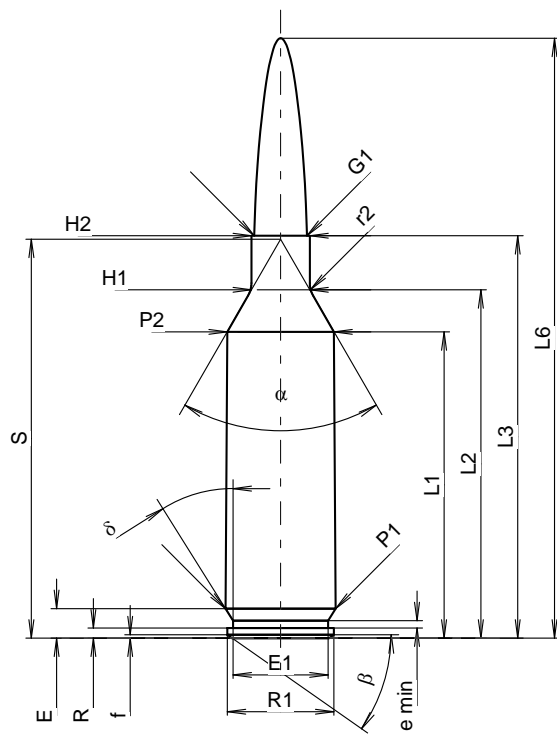
I

Datum

19-05-22

Revision

Ursprungsland: US



Maßstab 1.04:1

Maße in << mm >>
Maße und Toleranzen für Messläufe
siehe Anhang CR1.

PATRONE MAXI**Längen**

L1 ¹⁾	=	38.96	-0.20
L2 ¹⁾	=	44.30	-0.20
L3 ¹⁾	=	51.18	
L4	=		
L5	=		
L6	=	76.30	

Hülsenboden

R	=	1.27	
R1	=	13.56	
R3	=		
E	=	3.75	
E1	=	12.07	
e min	=	0.94	
delta	=	32°	
f	=	0.41	
beta	=	35°	

Pulverkammer

P1	=	14.00	
P2 ¹⁾ *	=	13.58	-0.20

Schulterkonus

alpha *	=	60°	
S *	=	50.72	
r1 min	=		
r2	=	3.18	

Hülsenhals

H1 *	=	7.42	
H2 ¹⁾	=	7.42	

Geschoss

G1 ¹⁾	=	6.71	
G2	=		
F	=		
L3+G ¹⁾	=	60.25	

Drücke (Energien)**Mech. elektr. Wandler**

Pmax	=	4400 bar	
PK	=	5060 bar	
PE	=	5500 bar	
M	=	25.00	
EE	=	5100 Joule	

Verschiedene Daten

Fe ¹⁾³⁾	=	0.10	
delta L	=		

PATRONENLAGER MINI**Längen**

L1	=	38.94	
L2	=	44.21	
L3 ¹⁾	=	51.44	

Stoßboden

R	=		
R1	=	14.05	
R2	=		
R3	=		
r	=		

Pulverkammer

E	=	3.75	
P1 ¹⁾	=	14.01	
P2 *	=	13.61	

Schulterkonus

alpha ¹⁾ *	=	60°	
S *	=	50.73	
r1 max	=		
r2	=	3.18	

Hülsenhals

H1 *	=	7.52	
H2 ¹⁾	=	7.52	

Geschossübergang

G1 ¹⁾ *	=	6.71	
G ¹⁾	=	9.07	
alpha1	=	90°	
h	=	0.41	
s *	=	3.05	
i ¹⁾ *	=	1°	
w	=		

Lauf

F ¹⁾ *	=	6.50	
Z ¹⁾	=	6.71	

Züge

b	=	2.99	
N	=	5	
u	=	203.20	
Q	=	34.81	mm ²

Bemerkungen: 1) Kontrolle aus Sicherheitsgründen
3) Verschlussabstand an Schulter
* Grundmaße