

C.I.P.

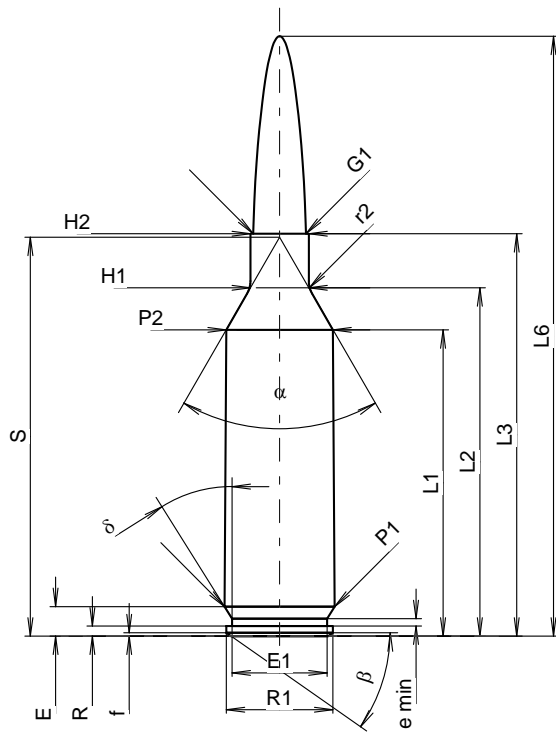
6,5 G.A.P. 4S

Country of Origin: US

TAB. I

Date 19-05-22

Revision



CARTRIDGE MAXI

Lengths

L1 ¹⁾	=	38.96	-0.20
L2 ¹⁾	=	44.30	-0.20
L3 ¹⁾	=	51.18	
L4	=		
L5	=		
L6	=	76.30	

Case Head

R	=	1.27	
R1	=	13.56	
R3	=		
E	=	3.75	
E1	=	12.07	
e min	=	0.94	
delta	=	32°	
f	=	0.41	
beta	=	35°	

Powder Chamber

P1	=	14.00	
P2 ¹⁾ *	=	13.58	-0.20

Junction Cone

alpha *	=	60°	
S *	=	50.72	
r1 min	=		
r2	=	3.18	

Collar

H1 *	=	7.42	
H2 ¹⁾	=	7.42	

Projectile

G1 ¹⁾	=	6.71	
G2	=		
F	=		
L3+G ¹⁾	=	60.25	

Pressures (Energies)

Method Transducer

Pmax	=	4400 bar	
PK	=	5060 bar	
PE	=	5500 bar	
M	=	25.00	
EE	=	5100 Joule	

Miscellaneous Dimensions

Fe ¹⁾³⁾	=	0.10	
delta L	=		

CHAMBER MINI

Lengths

L1	=	38.94	
L2	=	44.21	
L3 ¹⁾	=	51.44	

Breech

R	=		
R1	=	14.05	
R2	=		
R3	=		
r	=		

Powder Chamber

E	=	3.75	
P1 ¹⁾	=	14.01	
P2 *	=	13.61	

Junction Cone

alpha ¹⁾ *	=	60°	
S *	=	50.73	
r1 max	=		
r2	=	3.18	

Collar

H1 *	=	7.52	
H2 ¹⁾	=	7.52	

Commencement of Rifling

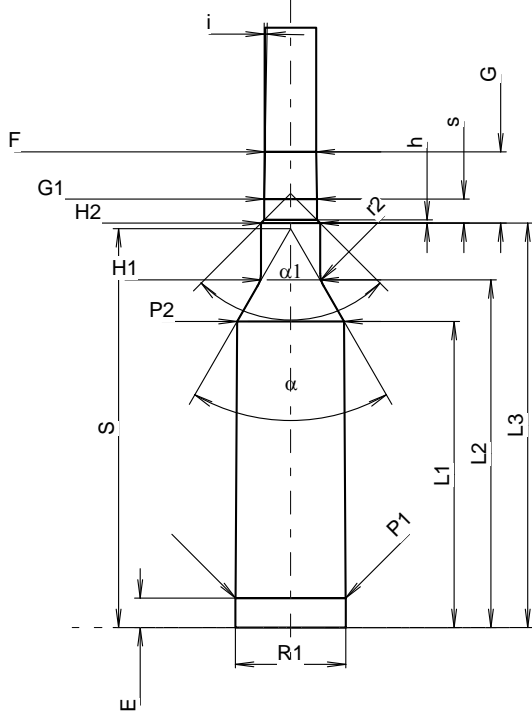
G1 ¹⁾ *	=	6.71	
G ¹⁾	=	9.07	
alpha 1	=	90°	
h	=	0.41	
s *	=	3.05	
i ¹⁾ *	=	1°	
w	=		

Barrel

F ¹⁾ *	=	6.50	
Z ¹⁾	=	6.71	

Grooves

b	=	2.99	
N	=	5	
u	=	203.20	
Q	=	34.81	mm ²



Scale 1.04:1

Dimensions in << mm >>
Dimensions and Tolerances for Proof Barrels
see Appendix CR1.

Notes: 1) Check for safety reasons
3) Headspace on Shoulder
* Basic dimensions