

**C.I.P.****6,5 x 39**

TAB.

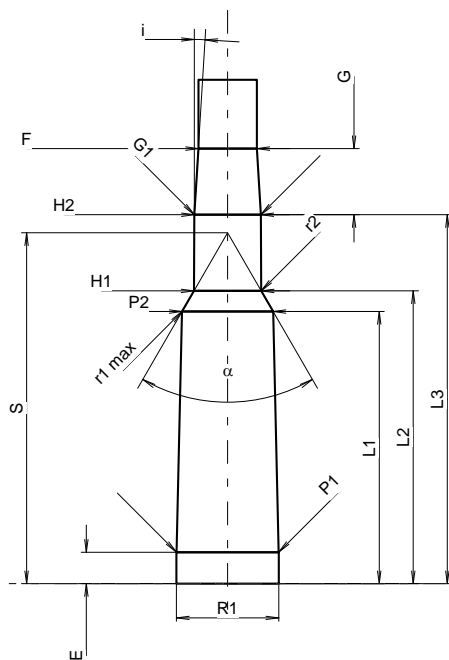
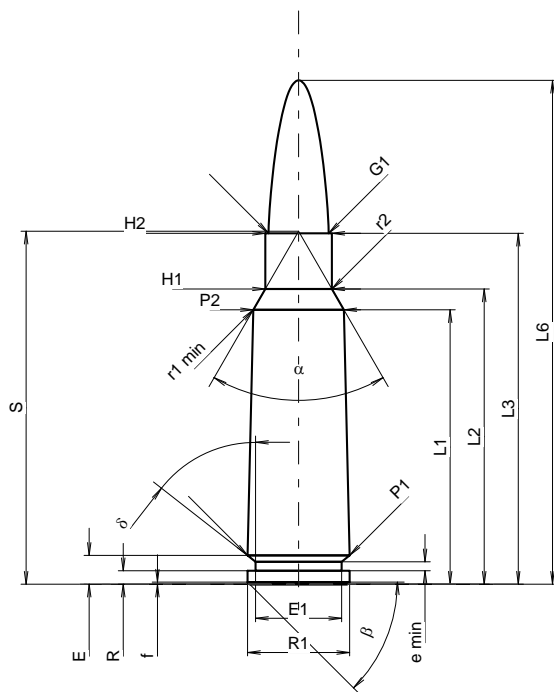
I

Datum

13-05-22

Revision

Ursprungsland: RU



Maßstab 1.19:1

Maße in << mm >>  
Maße und Toleranzen für Messläufe  
siehe Anhang CR 1.

**PATRONE MAXI****Längen**

L1 <sup>1)</sup>	=	30.50	-0.20
L2 <sup>1)</sup>	=	32.81	-0.20
L3 <sup>1)</sup>	=	39.00	
L4	=		
L5	=		
L6	=	56.00	

**Hülsenboden**

R	=	1.50	
R1	=	11.35	
R3	=		
E	=	3.20	
E1	=	9.56	
e min	=	1.00	
delta	=	52°	
f	=	0.25	
beta	=	45°	

**Pulverkammer**

P1	=	11.35	
P2 <sup>1)</sup> *	=	10.07	-0.20

**Schulterkonus**

alpha *	=	60°	
S *	=	39.22	
r1 min	=	1.00	
r2	=	1.50	

**Hülsenhals**

H1 *	=	7.40	
H2 <sup>1)</sup>	=	7.40	

**Geschoss**

G1 <sup>1)</sup>	=	6.70	
G2	=		
F	=		
L3+G <sup>1)</sup>	=	46.35	

**Drücke (Energien)****Mech. elektr. Wandler**

Pmax	=	4100 bar	
PK	=	4715 bar	
PE	=	5125 bar	
M	=	25.00	
EE	=	2500 Joule	

**Verschiedene Daten**

Fe <sup>1)3)</sup>	=	0.10	
delta L	=	0.22	

**PATRONENLAGER MINI****Längen**

L1	=	30.24	
L2	=	32.54	
L3 <sup>1)</sup>	=	41.00	

**Stoßboden**

R	=	1.50	
R1	=	11.37	
R2	=		
R3	=		
r	=		

**Pulverkammer**

E	=	3.50	
P1 <sup>1)</sup>	=	11.36	
P2 *	=	10.12	

**Schulterkonus**

alpha <sup>1)</sup> *	=	60°	
S *	=	39.00	
r1 max	=	0.50	
r2	=	1.50	

**Hülsenhals**

H1 *	=	7.46	
H2 <sup>1)</sup>	=	7.40	

**Geschossübergang**

G1 <sup>1)</sup> *	=	7.40	
G <sup>1)</sup>	=	7.35	
alpha l	=		
h	=		
s	=		
i <sup>1)</sup> *	=	3°30'12"	
w	=		

**Lauf**

F <sup>1)</sup> *	=	6.50	
Z <sup>1)</sup>	=	6.70	

**Züge**

b	=	2.50	
N	=	4	
u	=	250.00	
Q	=	34.21	mm <sup>2</sup>

Bemerkungen: 1) Kontrolle aus Sicherheitsgründen  
3) Verschlussabstand an Schulter  
\* Grundmaße