

**C.I.P.****6,8 Western**

Ursprungsland: US

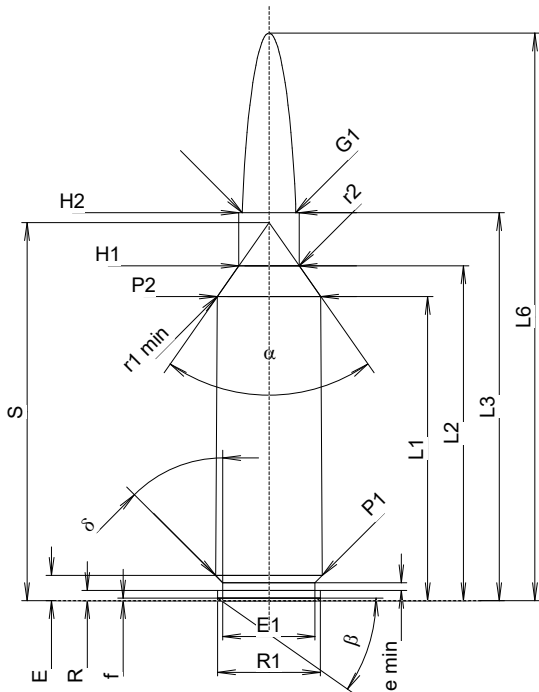
TAB.

I

Datum

22-11-08

Revision

**PATRONE MAXI****Längen**

L1 <sup>1)</sup>	=	40.22	-0.20
L2 <sup>1)</sup>	=	44.29	-0.20
L3 <sup>1)</sup>	=	51.31	
L4	=		
L5	=		
L6	=	75.06	

**Hülsenboden**

R	=	1.37	
R1	=	13.59	
R3	=		
E	=	3.35	
E1	=	12.19	
e min	=	1.02	
delta	=	45°	
f	=	0.35	
beta	=	35°	

**Pulverkammer**

P1	=	14.12	
P2 <sup>1)</sup> *	=	13.67	-0.20

**Schulterkonus**

alpha *	=	70°	
S *	=	49.99	
r1 min	=	1.27	
r2	=	2.54	

**Hülsenhals**

H1 *	=	7.98	
H2 <sup>1)</sup>	=	7.98	

**Geschoss**

G1 <sup>1)</sup>	=	7.06	
G2	=		
F	=		
L3+G <sup>1)</sup>	=	54.31	

**Drücke (Energien)****Mech. elektr. Wandler**

Pmax	=	4400 bar	
PK	=	5060 bar	
PE	=	5500 bar	
M	=	25.00	
EE	=	5040 Joule	

**Verschiedene Daten**

Fe <sup>1)3)</sup>	=	0.10	
delta L	=	0.10	

**PATRONENLAGER MINI****Längen**

L1	=	40.10	
L2	=	44.15	
L3 <sup>1)</sup>	=	51.56	

**Stoßboden**

R	=		
R1	=	14.19	
R2	=		
R3	=		
r	=		

**Pulverkammer**

E	=	3.35	
P1 <sup>1)</sup>	=	14.15	
P2 *	=	13.70	

**Schulterkonus**

alpha <sup>1)</sup> *	=	70°	
S *	=	49.89	
r1 max	=	1.27	
r2	=	3.05	

**Hülsenhals**

H1 *	=	8.03	
H2 <sup>1)</sup>	=	8.00	

**Geschossübergang**

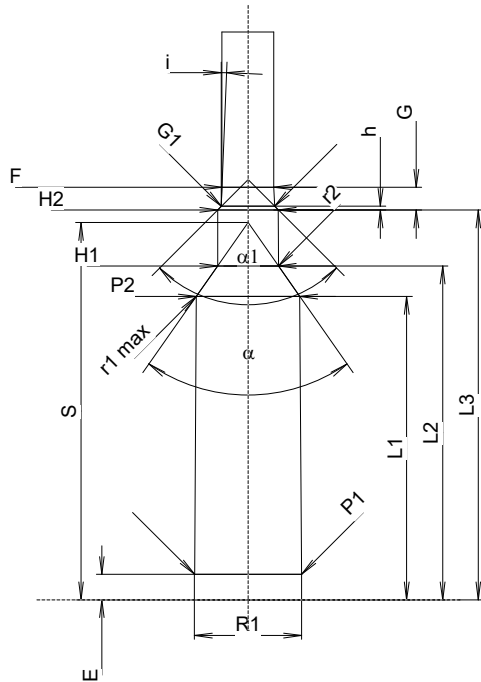
G1 <sup>1)</sup> *	=	7.06	
G <sup>1)</sup>	=	3.00	
alpha 1 *	=	90°	
h	=	0.47	
s	=		
i <sup>1)</sup> *	=	1°30'	
w	=		

**Lauf**

F <sup>1)</sup> *	=	6.86	
Z <sup>1)</sup>	=	7.04	

**Züge**

b	=	2.41	
N	=	6	
u	=	203.20	
Q	=	38.29	mm <sup>2</sup>



Maßstab 1:1

Maße in << mm >>  
Maße und Toleranzen für Messläufe  
siehe Anhang CR1.

Bemerkungen:

- 1) Kontrolle aus Sicherheitsgründen  
3) Verschlussabstand an Schulter  
\* Grundmaße