

**C.I.P.****8,5 x 55 Blaser**

TAB.

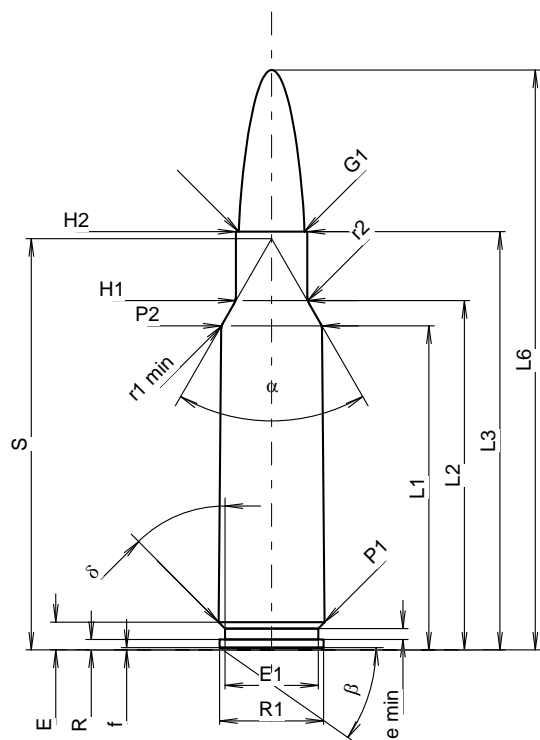
I

Datum

19-05-22

Revision

Ursprungsland: SE

**PATRONE MAXI****Längen**

L1 <sup>1)</sup>	=	42.38	-0.20
L2 <sup>1)</sup>	=	45.68	-0.20
L3 <sup>1)</sup>	=	54.70	
L4	=		
L5	=		
L6	=	75.84	

**Hülsenboden**

R	=	1.37	
R1	=	13.59	
R3	=		
E	=	3.62	
E1	=	12.19	
e min	=	1.42	
delta	=	45°	
f	=	0.30	
beta	=	35°	

**Pulverkammer**

P1	=	13.84	
P2 <sup>1)</sup> *	=	13.17	-0.20

**Schulterkonus**

alpha *	=	60°	
S *	=	53.79	
r1 min	=	1.50	
r2	=	2.00	

**Hülsenhals**

H1 *	=	9.36	
H2 <sup>1)</sup>	=	9.36	

**Geschoss**

G1 <sup>1)</sup>	=	8.59	
G2	=		
F	=		
L3+G <sup>1)</sup>	=	65.10	

**Drücke (Energien)****Mech. elektr. Wandler**

Pmax	=	4300 bar	
PK	=	4945 bar	
PE	=	5375 bar	
M	=	25.00	
EE	=	4500 Joule	

**Verschiedene Daten**

Fe <sup>1)3)</sup>	=	0.10	
delta L	=		

**PATRONENLAGER MINI****Längen**

L1	=	42.35	
L2	=	45.62	
L3 <sup>1)</sup>	=	55.00	

**Stoßboden**

R	=	1.37	
R1	=	13.92	
R2	=		
R3	=		
r	=		

**Pulverkammer**

E	=	3.62	
P1 <sup>1)</sup>	=	13.87	
P2 *	=	13.21	

**Schulterkonus**

alpha <sup>1)</sup> *	=	60°	
S *	=	53.79	
r1 max	=	1.50	
r2	=	2.00	

**Hülsenhals**

H1 *	=	9.43	
H2 <sup>1)</sup>	=	9.38	

**Geschossübergang**

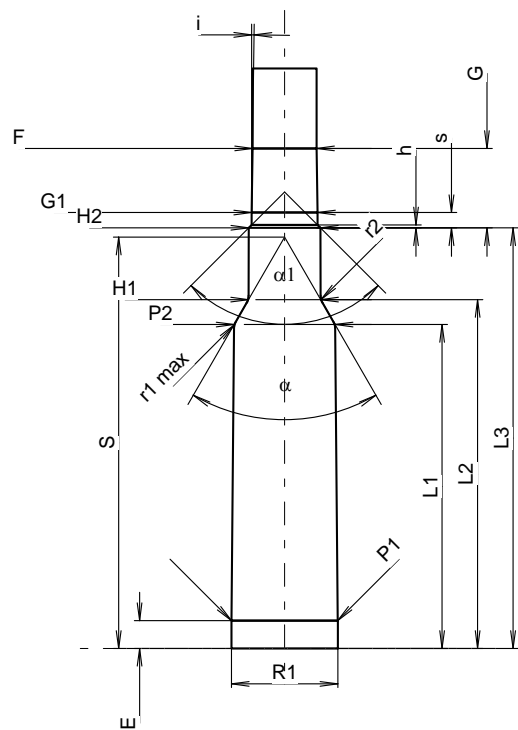
G1 <sup>1)</sup> *	=	8.60	
G <sup>1)</sup>	=	10.40	
alpha l	=	90°	
h	=	0.39	
s *	=	2.00	
i <sup>1)</sup> *	=	0°45'	
w	=		

**Lauf**

F <sup>1)</sup> *	=	8.38	
Z <sup>1)</sup>	=	8.59	

**Züge**

b	=	4.27	
N	=	4	
u	=	304.80	
Q	=	57.03	mm <sup>2</sup>



Maßstab 1.01:1

Maße in << mm >>  
Maße und Toleranzen für Messläufe  
siehe Anhang CR 1.

Bemerkungen: 1) Kontrolle aus Sicherheitsgründen  
3) Verschlussabstand an Schulter  
\* Grundmaße