

C.I.P.**9 x 39**

TAB.

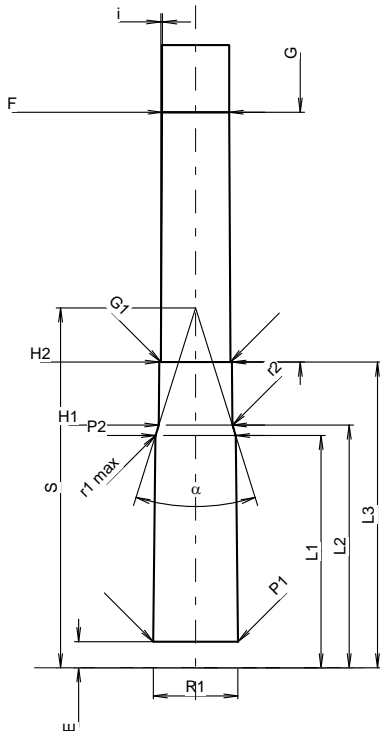
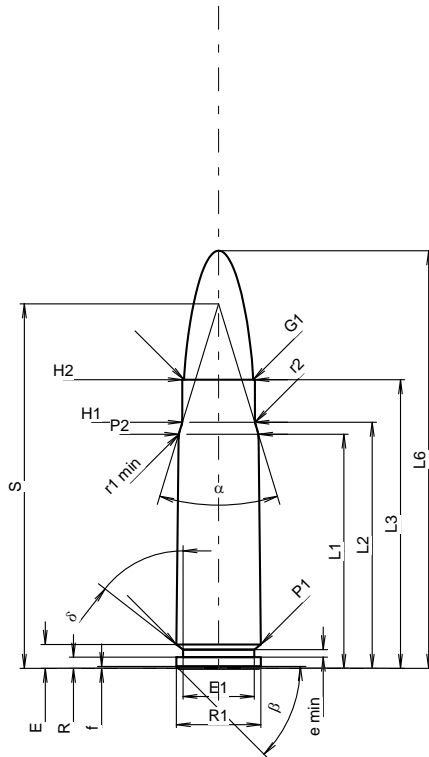
I

Datum

18-05-16

Revision

Ursprungsland: RU



Maßstab 1:1.01

Maße in << mm >>
Maße und Toleranzen für Messläufe
siehe Anhang CR1.

PATRONE MAXI**Längen**

L1 ¹⁾	=	31.40	-0.20
L2 ¹⁾	=	33.00	-0.20
L3 ¹⁾	=	38.70	
L4	=		
L5	=		
L6	=	56.00	

Hülsenboden

R	=	1.50	
R1	=	11.33	
R3	=		
E	=	3.20	
E1	=	9.56	
e min	=	1.00	
delta	=	51°58'12"	
f	=	0.25	
beta	=	45°	

Pulverkammer

P1	=	11.35	
P2 ¹⁾ *	=	10.70	-0.20

Schulterkonus

alpha *	=	34°03'	
S ¹⁾	=	48.87	
r1 min	=	4.00	
r2	=	3.00	

Hülsenhals

H1 *	=	9.72	
H2 ¹⁾	=	9.72	

Geschoss

G1 ¹⁾	=	9.27	
G2	=		
F	=		
L3+G ¹⁾	=	72.20	

Drücke (Energien)**Mech. elektr. Wandler**

Pmax	=	3550 bar	
PK	=	4083 bar	
PE	=	4440 bar	
M	=	25.00	
EE	=	2500 Joule	

Verschiedene Daten

Fe ³⁾	=	0.15	
delta L	=	0.19	

PATRONENLAGER MINI**Längen**

L1	=	31.15	
L2	=	32.55	
L3 ¹⁾	=	41.00	

Stoßboden

R	=	1.50	
R1	=	11.35	
R2	=		
R3	=		
r	=		

Pulverkammer

E	=	3.50	
P1 ¹⁾	=	11.36	
P2 *	=	10.75	

Schulterkonus

alpha ¹⁾ *	=	34°54'	
S *	=	48.25	
r1 max	=	0.50	
r2	=	3.00	

Hülsenhals

H1 *	=	9.87	
H2 ¹⁾	=	9.72	

Geschossübergang

G1 ¹⁾ *	=	9.35	
G ¹⁾	=	33.50	
alpha l	=		
h	=		
s	=		
i ¹⁾ *	=	0°18'	
w	=		

Lauf

F ¹⁾ *	=	9.00	
Z ¹⁾	=	9.27	

Züge

b	=	4.50	
N	=	4	
u	=	240.00	
Q	=	66.16	mm ²

Bemerkungen: 1) Kontrolle aus Sicherheitsgründen
3) Verschlussabstand an Schulter
* Grundmaße