

**C.I.P.****300 Blaser Mag.**

TAB.

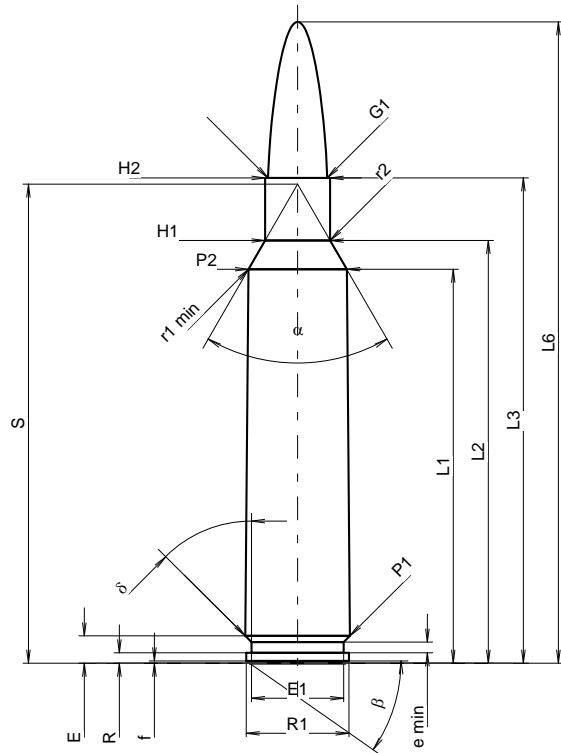
I

Datum

09-05-05

Revision

Ursprungsland: SE

**PATRONE MAXI****Längen**

L1 <sup>1)</sup>	=	52.12	-0.20
L2 <sup>1)</sup>	=	55.92	-0.20
L3 <sup>1)</sup>	=	64.20	
L4	=		
L5	=		
L6	=	84.84	

**Hülsenboden**

R	=	1.37	
R1	=	13.59	
R3	=		
E	=	3.61	
E1	=	12.19	
e min	=	1.42	
delta	=	45°	
f	=	0.30	
beta	=	35°	

**Pulverkammer**

P1	=	13.84	
P2 <sup>1)</sup> *	=	13.00	-0.20

**Schulterkonus**

alpha *	=	60°	
S *	=	63.38	
r1 min	=	1.50	
r2	=	2.00	

**Hülsenhals**

H1 *	=	8.61	
H2 <sup>1)</sup>	=	8.61	

**Geschoss**

G1 <sup>1)</sup>	=	7.83	
G2	=		
F	=		
L3+G <sup>1)</sup>	=	69.80	

**Drücke (Energien)****Mech. elektr. Wandler**

Pmax	=	4200 bar	
PK	=	4830 bar	
PE	=	5250 bar	
M	=	25.00	
EE	=	5545 Joule	

**Verschiedene Daten**

Fe <sup>1)3)</sup>	=	0.10	
delta L	=		

**PATRONENLAGER MINI****Längen**

L1	=	52.10	
L2	=	55.87	
L3 <sup>1)</sup>	=	64.50	

**Stoßboden**

R	=	1.37	
R1	=	13.92	
R2	=		
R3	=		
r	=		

**Pulverkammer**

E	=	3.61	
P1 <sup>1)</sup>	=	13.87	
P2 *	=	13.03	

**Schulterkonus**

alpha <sup>1)</sup> *	=	60°	
S *	=	63.38	
r1 max	=	1.50	
r2	=	2.00	

**Hülsenhals**

H1 *	=	8.68	
H2 <sup>1)</sup>	=	8.63	

**Geschossübergang**

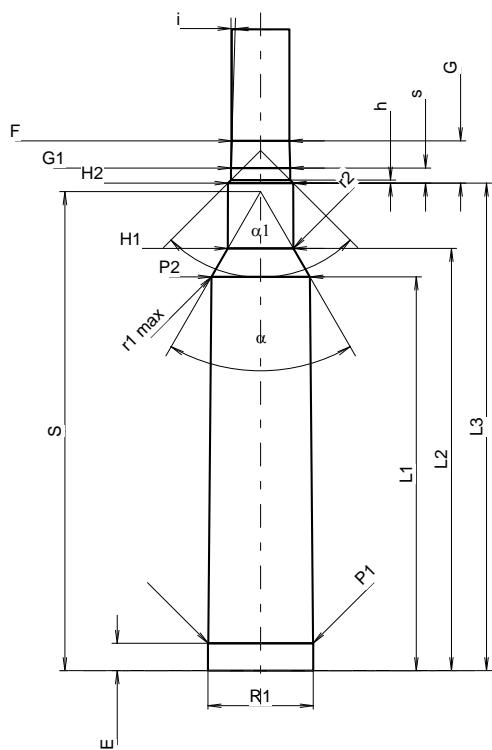
G1 <sup>1)</sup> *	=	7.84	
G <sup>1)</sup>	=	5.60	
alpha l	=	90°	
h	=	0.40	
s *	=	2.00	
i <sup>1)</sup> *	=	1°45'	
w	=		

**Lauf**

F <sup>1)</sup> *	=	7.62	
Z <sup>1)</sup>	=	7.82	

**Züge**

b	=	4.49	
N	=	4	
u	=	279.40	
Q	=	47.52	mm <sup>2</sup>



Maßstab 1:1

Maße in << mm >>  
Maße und Toleranzen für Messläufe  
siehe Anhang CR 1.

Bemerkungen: 1) Kontrolle aus Sicherheitsgründen  
3) Verschlussabstand an Schulter  
\* Grundmaße