

# C.I.P.

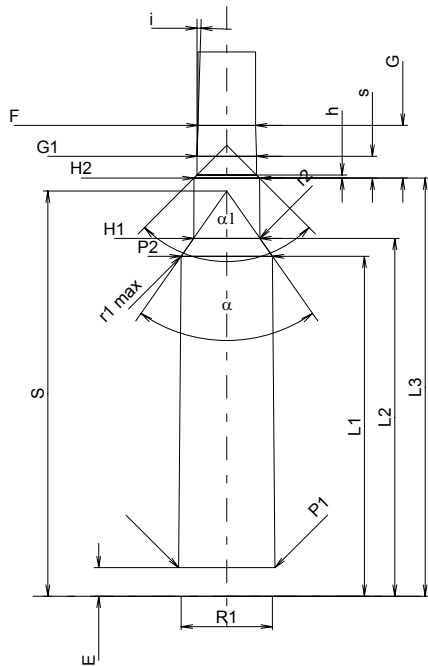
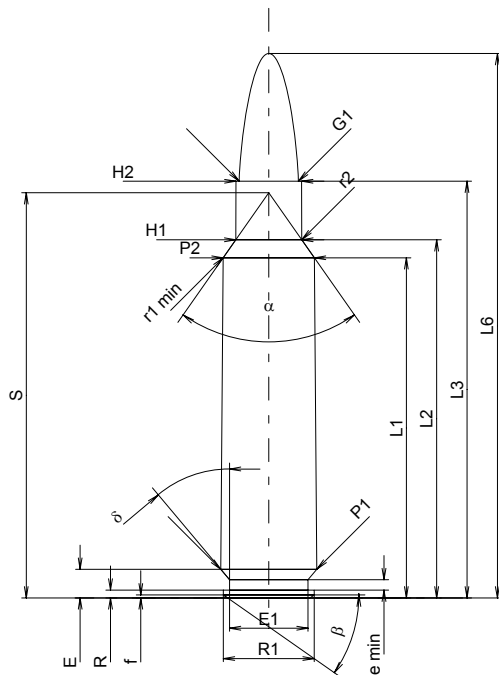
## 30 - 284 Win.

Country of Origin: US

TAB. I

Date 98-02-09

Revision 02-05-15



Scale 1:1

Dimensions in << mm >>  
Dimensions and Tolerances for Proof Barrels  
see Appendix CR 1.

### CARTRIDGE MAXI

#### Lengths

L1 <sup>1)</sup>	=	44.98	-0.20
L2 <sup>1)</sup>	=	47.36	-0.20
L3 <sup>1)</sup>	=	55.10	
L4	=		
L5	=		
L6	=	72.00	

#### Case Head

R	=	1.02	
R1	=	12.01	
R3	=		
E	=	3.78	
E1	=	10.39	
e min	=	1.37	
δ	=	40°	
f	=	0.38	
β	=	35°	

#### Powder Chamber

P1	=	12.72	
P2 <sup>1)*</sup>	=	12.06	-0.20

#### Junction Cone

α <sup>*</sup>	=	70°	
S <sup>*</sup>	=	53.59	
r1 min	=	0.80	
r2	=	3.20	

#### Collar

H1 <sup>*</sup>	=	8.72	
H2 <sup>1)</sup>	=	8.67	

#### Projectile

G1 <sup>1)</sup>	=	7.85	
G2	=		
F <sup>1)</sup>	=		
L3+G	=	62.08	

#### Pressures (Energies)

##### Method Transducer

Pmax	=	3800 bar	
PK	=	4370 bar	
PE	=	4750 bar	
M	=	25.00	
EE	=	4300 Joule	

#### Miscellaneous Dimensions

Fe <sup>1)</sup>	=	0.15	
delta L	=		

### CHAMBER MINI

#### Lengths

L1	=	44.96	
L2	=	47.34	
L3 <sup>1)</sup>	=	55.30	

#### Breech

R	=		
R1	=	12.04	
R2	=		
R3	=		
r	=		

#### Powder Chamber

E	=	3.78	
P1 <sup>1)</sup>	=	12.75	
P2 <sup>*</sup>	=	12.09	

#### Junction Cone

α <sup>1)*</sup>	=	70°	
S <sup>*</sup>	=	53.59	
r1 max	=	0.80	
r2	=	3.20	

#### Collar

H1 <sup>*</sup>	=	8.75	
H2 <sup>1)</sup>	=	8.70	

#### Commencement of Rifling

G1 <sup>1)*</sup>	=	7.87	
G <sup>1)</sup>	=	6.98	
α1	=	90°	
h	=	0.42	
s <sup>*</sup>	=	2.89	
i <sup>1)*</sup>	=	1°45'	
w	=		

#### Barrel

F <sup>1)*</sup>	=	7.62	
Z <sup>1)</sup>	=	7.82	

#### Grooves

b	=	4.47	
N	=	4	
u	=	305.00	
Q	=	47.51	mm <sup>2</sup>

Notes: 1) Check for safety reasons  
\* Basic dimensions