

# C.I.P.

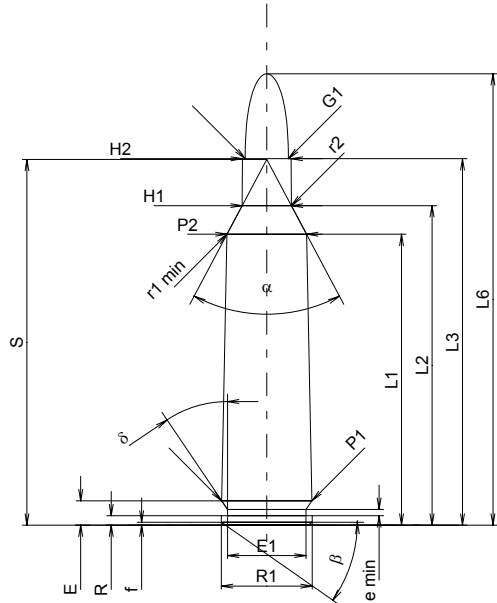
## 22-250 Rem

Country of Origin: US

TAB. I

Date 84-06-14

Revision 02-05-15



### CARTRIDGE MAXI

#### Lengths

L1 <sup>1)</sup>	=	38.48	-0.20
L2 <sup>1)</sup>	=	42.26	-0.20
L3 <sup>1)</sup>	=	48.46	
L4	=		
L5	=		
L6	=	59.69	

#### Case Head

R	=	1.24	
R1	=	12.01	
R3	=		
E	=	3.22	
E1	=	10.39	
e min	=	0.84	
delta	=	34°	
f	=	0.38	
beta	=	35°	

#### Powder Chamber

P1	=	11.93	
P2 <sup>1)*</sup>	=	10.52	-0.20

#### Junction Cone

alpha*	=	56°	
S*	=	48.37	
r1 min	=	2.54	
r2	=	2.54	

#### Collar

H1*	=	6.50	
H2 <sup>1)</sup>	=	6.45	

#### Projectile

G1 <sup>1)</sup>	=	5.70	
G2	=		
F	=		
L3+G <sup>1)</sup>	=	52.39	

#### Pressures (Energies)

##### Method Transducer

Pmax	=	4050 bar	
PK	=	4658 bar	
PE	=	5060 bar	
M	=	25.00	
EE	=	2370 Joule	

#### Miscellaneous Dimensions

Fe <sup>1)</sup>	=	0.10	
delta L	=	0.08	

### CHAMBER MINI

#### Lengths

L1	=	38.36	
L2	=	42.15	
L3 <sup>1)</sup>	=	48.87	

#### Breech

R	=		
R1	=	12.09	
R2	=		
R3	=		
r	=		

#### Powder Chamber

E	=	3.22	
P1 <sup>1)</sup>	=	11.96	
P2*	=	10.56	

#### Junction Cone

alpha <sup>1)*</sup>	=	56°	
S*	=	48.29	
r1 max	=	0.64	
r2	=	3.18	

#### Collar

H1*	=	6.53	
H2 <sup>1)</sup>	=	6.48	

#### Commencement of Rifling

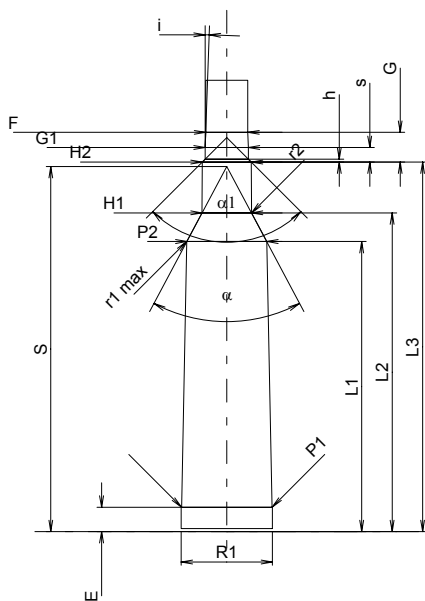
G1 <sup>1)*</sup>	=	5.70	
G <sup>1)</sup>	=	3.93	
alpha1	=	90°	
h	=	0.39	
s*	=	1.93	
i <sup>1)*</sup>	=	2°	
w	=		

#### Barrel

F <sup>1)*</sup>	=	5.56	
Z <sup>1)</sup>	=	5.69	

#### Grooves

b	=	2.03	
N	=	6	
u	=	356.00	
Q	=	25.09	mm <sup>2</sup>



Scale 1:1

Dimensions in << mm >>  
Dimensions and Tolerances for Proof Barrels  
see Appendix CR 1.

Notes: 1) Check for safety reasons  
\* Basic dimensions