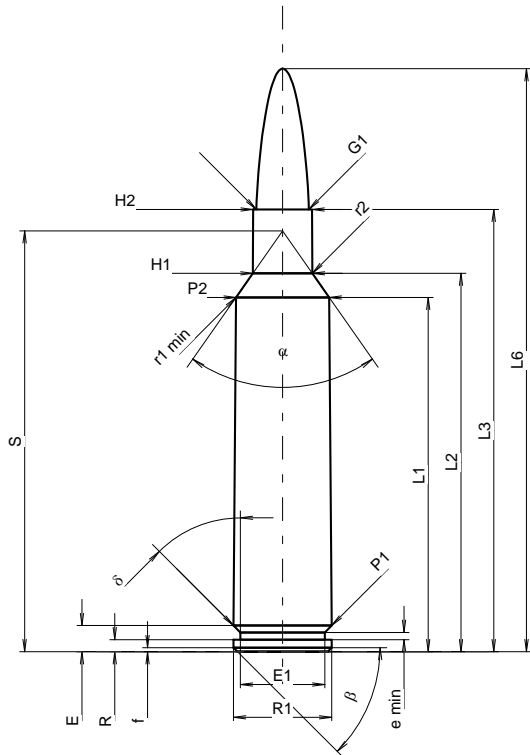


C.I.P.

255 GS

TAB. I
Date 10-05-26

Country of Origin: IT

Revision

CARTRIDGE MAXI
Lengths

L1 ¹⁾	=	44.06	-0.20
L2 ¹⁾	=	47.06	-0.20
L3 ¹⁾	=	55.00	
L4	=		
L5	=		
L6	=	72.50	

Case Head

R	=	1.50	
R1	=	12.20	
R3	=		
E	=	3.25	
E1	=	10.50	
e min	=	0.90	
delta	=	45°	
f	=	0.50	
beta	=	45°	

Powder Chamber

P1	=	12.20	
P2 ¹⁾ *	=	11.58	-0.20

Junction Cone

alpha [*]	=	70°	
S [*]	=	52.33	
r1 min	=	0.76	
r2	=	3.18	

Collar

H1 [*]	=	7.38	
H2 ¹⁾	=	7.33	

Projectile

G1 ¹⁾	=	6.54	
G2	=		
F	=		
L3+G ¹⁾	=	64.34	

Pressures (Energies)
Method Transducer

Pmax	=	4400 bar	
PK	=	5060 bar	
PE	=	5500 bar	
M	=	25.00	
EE	=	3700 Joule	

Miscellaneous Dimensions

Fe ¹⁾³⁾	=	0.10	
delta L	=		

CHAMBER MINI
Lengths

L1	=	44.02	
L2	=	47.05	
L3 ¹⁾	=	55.10	

Breech

R	=	1.50	
R1	=	12.23	
R2	=		
R3	=		
r	=	0.40	

Powder Chamber

E	=	3.20	
P1 ¹⁾	=	12.23	
P2 [*]	=	11.64	

Junction Cone

alpha ¹⁾ *	=	70°	
S [*]	=	52.34	
r1 max	=	0.76	
r2	=	3.18	

Collar

H1 [*]	=	7.40	
H2 ¹⁾	=	7.35	

Commencement of Rifling

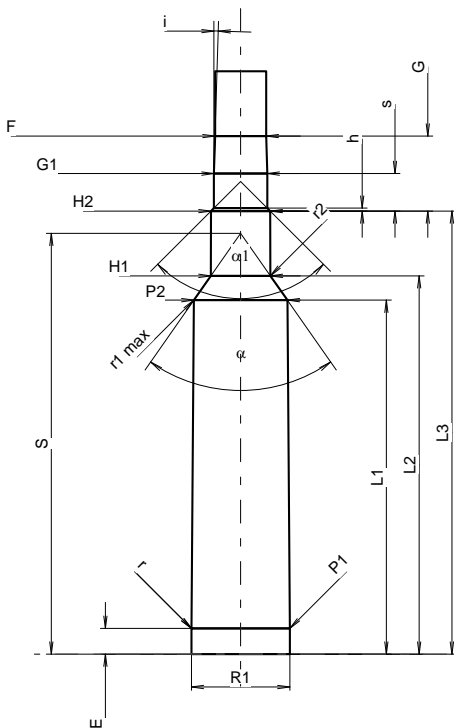
G1 ¹⁾ *	=	6.63	
G ¹⁾	=	9.34	
alpha l	=	90°	
h	=	0.36	
s [*]	=	4.67	
i ¹⁾ *	=	1°43'2"	
w	=		

Barrel

F ¹⁾ *	=	6.35	
Z ¹⁾	=	6.53	

Grooves

b	=	2.44	
N	=	6	
u	=	254.00	
Q	=	33.02	mm ²



Scale 1.06:1

 Dimensions in << mm >>
 Dimensions and Tolerances for Proof Barrels
 see Appendix CR 1.

 Notes: 1) Check for safety reasons
 3) Headspace on Shoulder
 * Basic dimensions