

C.I.P.**360 Buckhammer**

TAB.

II

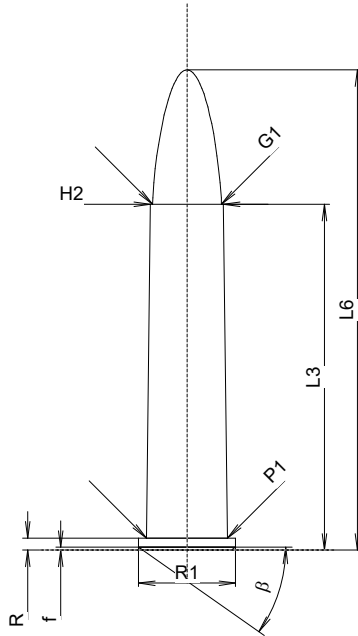
Date

23-11-08

Country of Origin: US

Revision

Alternative Names: 360 BHMR

**CARTRIDGE MAXI****Lengths**

L1	=	
L2	=	
L3 ¹⁾	=	45.72
L4	=	
L5	=	
L6	=	63.50

Case Head

R ¹⁾	=	1.60	-0.25
R1	=	12.85	
R3	=		
E	=		
E1	=		
e min	=		
δ	=	0°	
f	=	0.38	
β	=	35°	

Powder Chamber

P1	=	10.74
P2	=	

Junction Cone

α	=	
S	=	
r1 min	=	
r2	=	

Collar

H1	=	
H2 ¹⁾	=	9.65

Projectile

G1 ¹⁾	=	9.12
G2	=	
F	=	
L3+G ¹⁾	=	54.71

Pressures (Energies)**Method Transducer**

Pmax	=	3535 bar
PK	=	4065 bar
PE	=	4419 bar
M	=	25.00
EE	=	2900 Joule

Miscellaneous Dimensions

Fe	=	0.15
delta L	=	

CHAMBER MINI**Lengths**

L1	=	
L2	=	
L3 ¹⁾	=	45.86

Breech

R ¹⁾	=	1.60
R1	=	13.11
R2	=	
R3	=	
r	=	

Powder Chamber

E	=	
P1 ¹⁾	=	10.79
P2	=	

Junction Cone

α	=	
S	=	
r1 max	=	
r2	=	

Collar

H1	=	
H2 ¹⁾	=	9.69

Commencement of Rifling

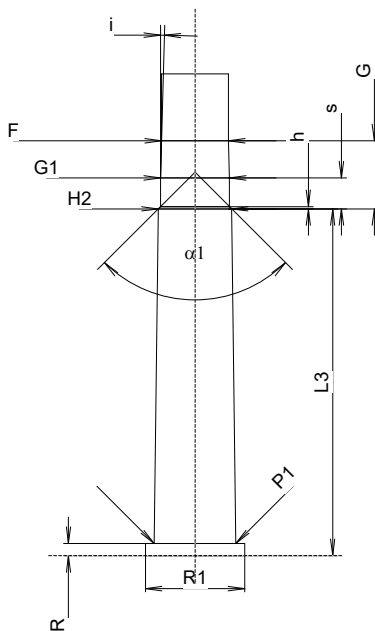
G1 ¹⁾ *	=	9.12
G ¹⁾ *	=	8.99
α1	=	90°
h *	=	0.28
s	=	4.09
i ¹⁾	=	1°30'
w	=	

Barrel

F ¹⁾ *	=	8.86
Z ¹⁾	=	9.07

Grooves

b	=	2.92
N	=	7
u	=	304.80
Q	=	63.81 mm ²



Scale 1:1

Dimensions in << mm >>
Dimensions and Tolerances for Proof Barrels
see Appendix 1.

Notes: 1) Check for safety reasons
* Basic dimensions