

C.I.P.**8,5 x 63 R**

TAB.

II

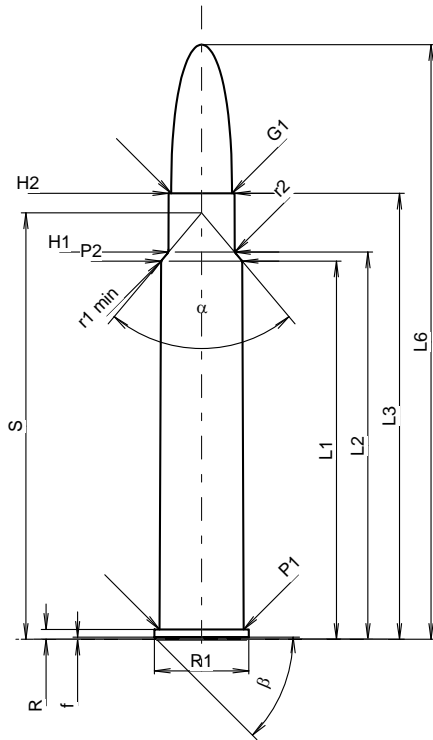
Datum

92-02-27

Revision

21-04-07

Ursprungsland: DE

**PATRONE MAXI****Längen**

L1 *	=	53.42
L2 *	=	54.69
L3 ¹⁾	=	63.00
L4	=	
L5	=	
L6	=	84.00

Hülsenboden

R ¹⁾	=	1.40	-0.25
R1	=	13.32	
R3	=		
E	=		
E1	=		
e min	=		
delta	=		
f	=	0.30	
beta	=	45°	

Pulverkammer

P1	=	11.91
P2 *	=	11.47

Schulterkonus

alpha	=	80°13'47"
S	=	60.23
r1 min	=	0.50
r2	=	1.00

Hülsenhals

H1 *	=	9.33
H2 ¹⁾	=	9.32

Geschoss

G1 ¹⁾	=	8.59
G2	=	
F	=	
L3+G ¹⁾	=	72.00

Drücke (Energien)**Mech. elektr. Wandler**

Pmax	=	3800 bar
PK	=	4370 bar
PE	=	4750 bar
M	=	25.00
EE	=	5145 Joule

Verschiedene Daten

Fe ¹⁾⁴⁾	=	0.15
delta L	=	

PATRONENLAGER MINI**Längen**

L1 *	=	53.40
L2 *	=	54.67
L3 ¹⁾	=	63.55

Stoßboden

R ¹⁾	=	1.40
R1	=	13.37
R2	=	
R3	=	
r	=	

Pulverkammer

E	=	
P1 ¹⁾	=	11.94
P2 *	=	11.50

Schulterkonus

alpha	=	80°13'47"
S	=	60.22
r1 max	=	0.50
r2	=	1.25

Hülsenhals

H1 *	=	9.36
H2 ¹⁾	=	9.35

Geschossübergang

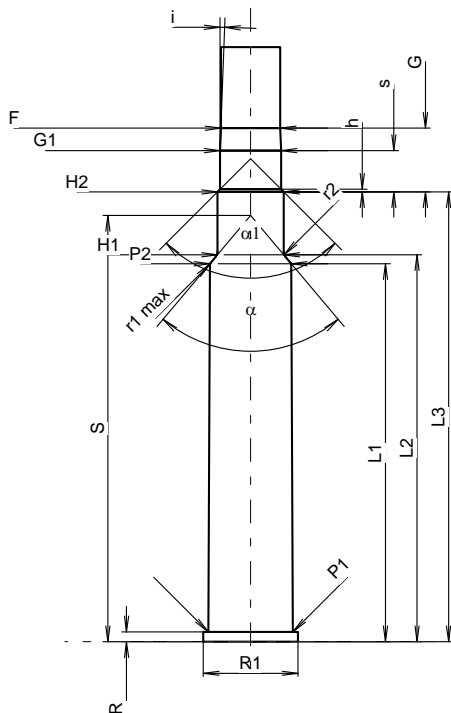
G1 ¹⁾ *	=	8.61
G ¹⁾ *	=	9.00
alpha1	=	90°
h	=	0.37
s *	=	5.83
i ¹⁾	=	2°04'40"
w	=	

Lauf

F ¹⁾ *	=	8.38
Z ¹⁾	=	8.59

Züge

b	=	2.79
N	=	6
u	=	254.00
Q	=	56.95 mm ²



Maßstab 1:1.07

Maße in << mm >>
Maße und Toleranzen für Messläufe
siehe Anhang CR 1.

Bemerkungen: 1) Kontrolle aus Sicherheitsgründen
4) Verschlussabstand an Rand
* Grundmaße