

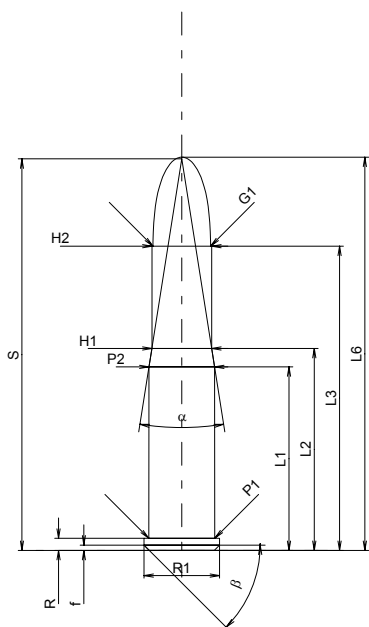
C.I.P.**11,15 x 60 R**

TAB. II

Date 84-06-14

Revision 02-05-15

Country of Origin: DE

**CARTRIDGE MAXI****Lengths**

L1 [*]	=	36.40
L2 [*]	=	40.05
L3 ¹⁾	=	60.35
L4	=	
L5	=	
L6	=	78.00

Case Head

R ¹⁾	=	2.40	-0.25
R1	=	15.00	
R3	=		
E	=		
E1	=		
e min	=		
delta	=		
f	=	1.05	
beta	=	45°	

Powder Chamber

P1	=	13.10
P2 [*]	=	13.00

Junction Cone

alpha	=	17°54'18"
S	=	77.66
r1 min	=	
r2	=	

Collar

H1 [*]	=	11.85
H2 ¹⁾	=	11.85

Projectile

G1 ¹⁾	=	11.40
G2	=	
F	=	
L3+G ¹⁾	=	87.85

Pressures (Energies)**Method Transducer**

Pmax	=	2800 bar
PK	=	3220 bar
PE	=	3500 bar
M	=	25.00
EE	=	2730 Joule

Miscellaneous Dimensions

Fe ¹⁾	=	0.15
delta L	=	

CHAMBER MINI**Lengths**

L1 [*]	=	36.40
L2 [*]	=	40.00
L3 ¹⁾	=	60.80

Breech

R ¹⁾	=	2.40
R1	=	15.05
R2	=	
R3	=	
r	=	

Powder Chamber

E	=	
P1 ¹⁾	=	13.13
P2 [*]	=	13.03

Junction Cone

alpha	=	17°50'20"
S	=	77.91
r1 max	=	
r2	=	

Collar

H1 [*]	=	11.90
H2 ¹⁾	=	11.88

Commencement of Rifling

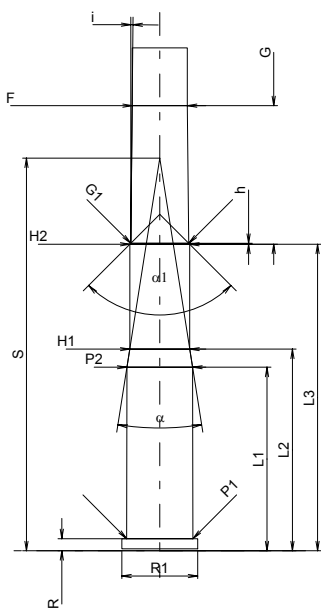
G1 ¹⁾ *	=	11.50
G ¹⁾ *	=	27.50
alpha1	=	90°
h [*]	=	0.19
s	=	
i ¹⁾	=	0°34'36"
w	=	

Barrel

F ¹⁾ *	=	10.95
Z ¹⁾	=	11.50

Grooves

b	=	5.60
N	=	4
u	=	550.00
Q	=	100.62 mm ²



Scale 1:1.5

Dimensions in << mm >>
Dimensions and Tolerances for Proof Barrels
see Appendix CR 1.

Notes: 1) Check for safety reasons
* Basic dimensions