

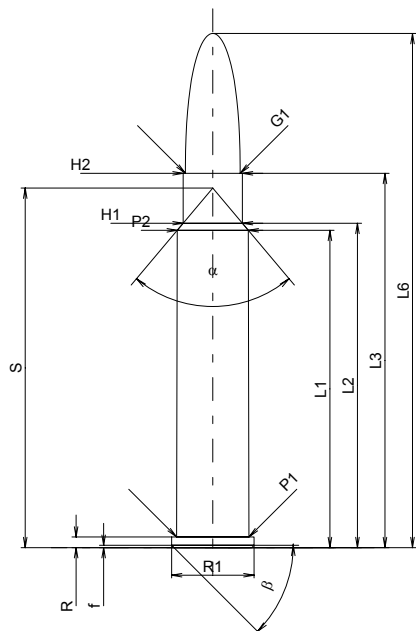
C.I.P.**7 x 50 R**

TAB. II

Date 92-02-27

Pays d'origine: DE

Révision 02-05-15

**CARTOUCHE MAXI****Longueurs**

L1 *	=	41.97
L2 *	=	42.90
L3 ¹⁾	=	49.50
L4	=	
L5	=	
L6	=	68.00

Colot

R ¹⁾	=	1.40	-0.25
R1	=	10.90	
R3	=		
E	=		
E1	=		
e min	=		
delta	=		
f	=	0.30	
beta	=	45°	

Chambre à poudre

P1	=	9.59
P2 *	=	9.40

Cône de raccordement

alpha	=	80°20'05"
S	=	47.54
r1 min	=	
r2	=	

Collet

H1 *	=	7.83
H2 ¹⁾	=	7.82

Projectile

G1 ¹⁾	=	7.25
G2	=	
F	=	
L3+G ¹⁾	=	56.00

Pressions (Énergies)**Méthode transducteur**

Pmax	=	3650 bar
PK	=	4198 bar
PE	=	4560 bar
M	=	25.00
EE	=	2940 Joule

Autres indications

Fe ¹⁾	=	0.15
delta L	=	

CHAMBRE MINI**Longueurs**

L1 *	=	41.98
L2 *	=	42.92
L3 ¹⁾	=	49.80

Cuvette

R ¹⁾	=	1.40
R1	=	10.93
R2	=	
R3	=	
r	=	

Chambre à poudre

E	=	
P1 ¹⁾	=	9.62
P2 *	=	9.43

Cône de raccordement

alpha	=	79°43'51"
S	=	47.63
r1 max	=	
r2	=	

Collet

H1 *	=	7.86
H2 ¹⁾	=	7.85

Prise de rayures

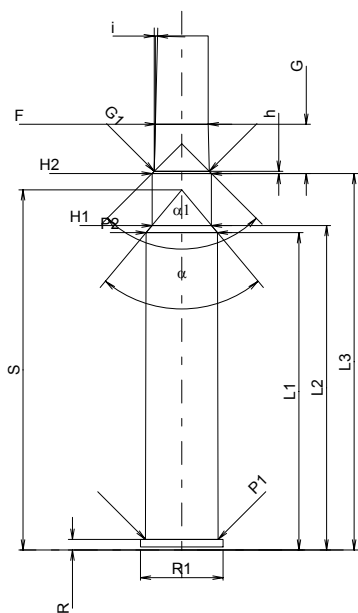
G1 ¹⁾ *	=	7.27
G ¹⁾ *	=	6.50
alpha1	=	90°
h *	=	0.29
s	=	
i ¹⁾	=	1°20'15"
w	=	

Canon

F ¹⁾ *	=	6.98
Z ¹⁾	=	7.24

Rayures

b	=	4.10
N	=	4
u	=	228.00
Q	=	40.54 mm ²



Échelle 1:1

Dimensions en << mm >>
Dimensions et tolérances pour les canons
d'épreuve: Voyez Annexe CR 1.

Notes: 1) A' contrôler pour la sécurité
* Dimensions de base