

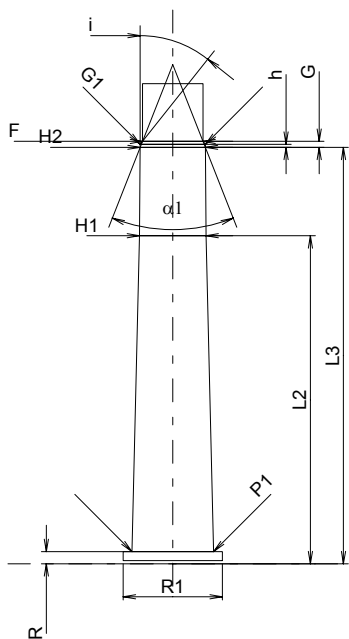
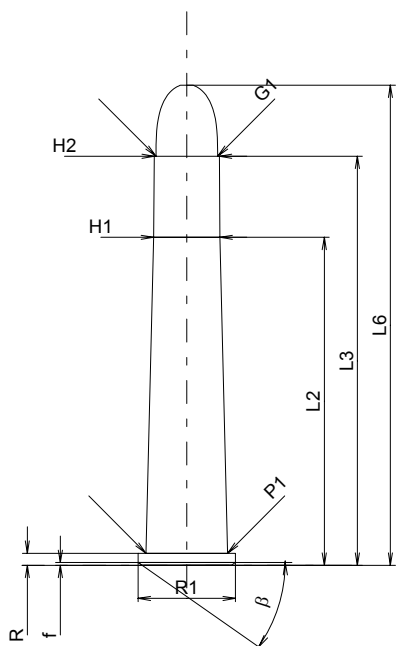
C.I.P.**32-40 Win.**

TAB. II

Date 84-06-14

Pays d'origine: US

Révision 02-05-15

**CARTOUCHE MAXI****Longueurs**

L1	=	
L2	=	43.38
L3 ¹⁾	=	54.10
L4	=	
L5	=	
L6	=	63.50

Colot

R ¹⁾	=	1.60	-0.25
R1	=	12.85	
R3	=		
E	=		
E1	=		
e min	=		
delta	=		
f	=	0.38	
beta	=	35°	

Chambre à poudre

P1	=	10.77
P2	=	

Cône de raccordement

alpha	=	
S	=	
r1 min	=	
r2	=	

Collet

H1*	=	8.78
H2 ¹⁾	=	8.61

Projectile

G1 ¹⁾	=	8.15
G2	=	
F	=	
L3+G ¹⁾	=	54.89

Pressions (Énergies)**Méthode transducteur**

Pmax	=	2350 bar
PK	=	2703 bar
PE	=	2940 bar
M	=	25.00
EE	=	1105 Joule

Autres indications

Fe ¹⁾	=	0.15
delta L	=	

CHAMBRE MINI**Longueurs**

L1	=	
L2	=	43.38
L3 ¹⁾	=	55.07

Cuvette

R ¹⁾	=	1.60
R1	=	13.11
R2	=	
R3	=	
r	=	

Chambre à poudre

E	=	
P1 ¹⁾	=	10.79
P2	=	

Cône de raccordement

alpha	=	
S	=	
r1 max	=	
r2	=	

Collet

H1*	=	8.81
H2 ¹⁾	=	8.62

Prise de rayures

G1 ¹⁾ *	=	8.62
G ¹⁾	=	0.79
alpha1*	=	43°
h	=	0.40
s	=	
i ¹⁾ *	=	21°30'
w	=	

Canon

F ¹⁾ *	=	8.00
Z ¹⁾	=	8.13

Rayures

b	=	2.51
N	=	6
u	=	406.00
Q	=	51.26 mm ²

Échelle 1:1

Dimensions en << mm >>
Dimensions et tolérances pour les canons
d'épreuve: Voyez Annexe CR 1.

Notes: 1) A' contrôler pour la sécurité
* Dimensions de base