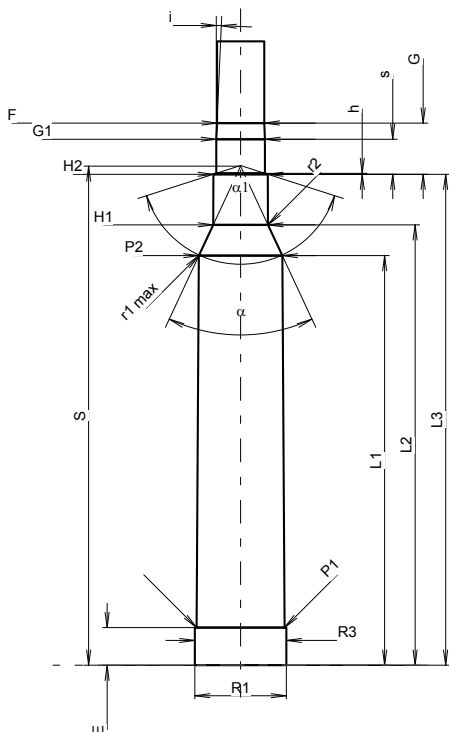
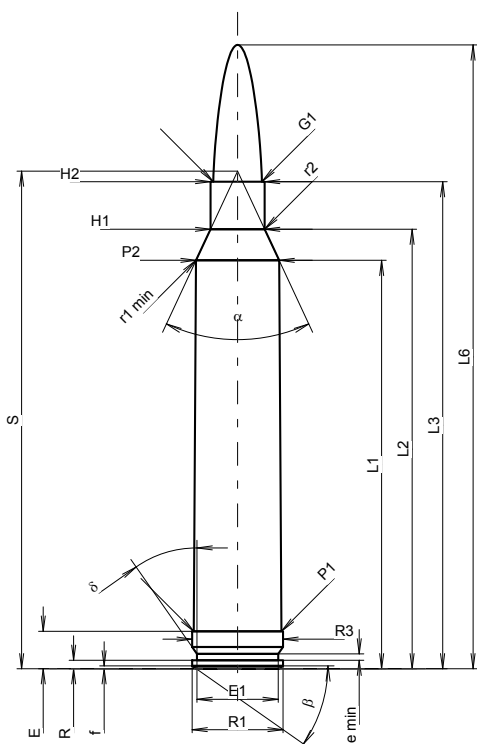


C.I.P.**7 mm STW**

TAB.	III
Date	00-02-15
Révision	08-09-23

Pays d'origine: US



Échelle 1:1.12

Dimensions en << mm >>
Dimensions et tolérances pour les canons
d'épreuve: Voyez Annexe CR 1.

CARTOUCHE MAXI**Longueurs**

L1 = 60.69
L2 = 65.32
L3 ¹⁾ = 72.39
L4 =
L5 =
L6 = 92.71

Culot

R = 1.27
R1 = 13.51
R3 = 13.51
E ¹⁾ = 5.58
E1 = 12.07
e min = 0.94
delta = 35°
f = 0.41
beta = 35°

Chambre à poudre

P1 = 13.03
P2 * = 12.37

Cône de raccordement

alpha * = 50°
S * = 73.95
r1 min = 1.02
r2 = 3.18

Collet

H1 * = 8.05
H2 ¹⁾ = 8.05

Projectile

G1 ¹⁾ = 7.23
G2 =
F =
L3+G ¹⁾ = 80.01

Pressions (Énergies)**Méthode transducteur**

Pmax = 4400 bar
PK = 5060 bar
PE = 5500 bar
M = 25.00
EE = 5250 Joule

Autres indications

Fe ¹⁾⁵⁾ = 0.10
delta L =

CHAMBRE MINI**Longueurs**

L1 = 60.88
L2 = 65.45
L3 ¹⁾ = 72.96

Cuvette

R =
R1 = 13.59
R2 =
R3 = 13.59
r =

Chambre à poudre

E ¹⁾ = 5.59
P1 ¹⁾ = 13.06
P2 * = 12.39

Cône de raccordement

alpha * = 50°
S * = 74.17
r1 max = 0.76
r2 = 3.81

Collet

H1 * = 8.13
H2 ¹⁾ = 8.10

Prise de rayures

G1 ¹⁾* = 7.23
G ¹⁾ = 7.62
alpha ¹⁾* = 144°19'10"
h = 0.14
s = 5.22
i ¹⁾* = 2°30'
w =

Canon

F ¹⁾* = 7.02
Z ¹⁾ = 7.21

Rayures

b = 2.87
N = 6
u = 241.00
Q = 40.39 mm²

Notes: 1) A' contrôler pour la sécurité
5) Feuillure sur la culot magnum
* Dimensions de base