

**C.I.P.****357 Magnum (carb)**

Country of Origin: US

TAB. IV

Date 84-06-14

Revision 05-11-02

**CARTRIDGE MAXI****Lengths**

L1 =  
 L2 =  
 L3 =  
 L4 =  
 L5 =  
 L6 =

**Case Head**

R =  
 R1 =  
 R3 =  
 E =  
 E1 =  
 e min =  
 $\delta$  =  
 f =  
 $\beta$  =

**Powder Chamber**

P1 =  
 P2 =

**Junction Cone**

$\alpha$  =  
 S =  
 r1 min =  
 r2 =

**Collar**

H1 =  
 H2 =

**Projectile**

G1 =  
 G2 =  
 F =  
 L3+G =

**Pressures (Energies)****Miscellaneous Dimensions**

Fe <sup>1)</sup> = 0.15  
 delta L =

**CHAMBER MINI****Lengths**

L1 =  
 L2 =  
 L3 <sup>1)</sup> = 33.07

**Breech**

R <sup>1)</sup> = 1.52  
 R1 = 11.28  
 R2 =  
 R3 =  
 r =

**Powder Chamber**

E =  
 P1 <sup>1)</sup> = 9.68  
 P2 =

**Junction Cone**

$\alpha$  =  
 S =  
 r1 max =  
 r2 =

**Collar**

H1 =  
 H2 <sup>1)</sup> = 9.65

**Commencement of Rifling**

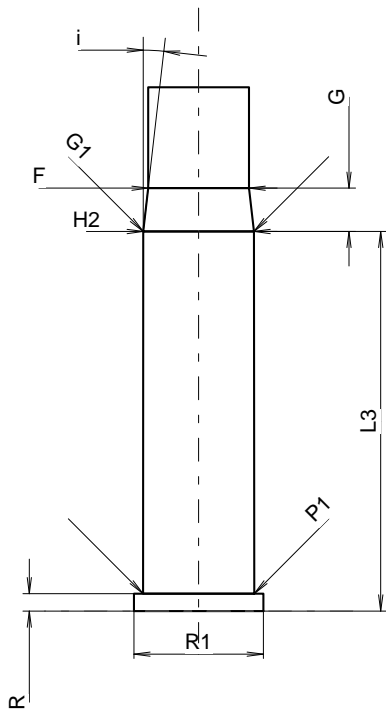
G1 <sup>1)</sup>\* = 9.65  
 G <sup>1)</sup> = 3.77  
 $\alpha 1^*$  =  
 h =  
 s =  
 i <sup>1)</sup>\* = 6°30'  
 w =

**Barrel**

F <sup>1)</sup>\* = 8.79  
 Z <sup>1)</sup> = 9.02

**Grooves**

b = 2.69  
 N = 6  
 u = 476.00  
 Q = 62.57 mm<sup>2</sup>



Scale 1.52:1

Dimensions in << mm >>  
 Dimensions and Tolerances for Proof Barrels  
 see Appendix .

Notes: 1) Check for safety reasons  
 \* Basic dimensions