

C.I.P.**450 SCH**

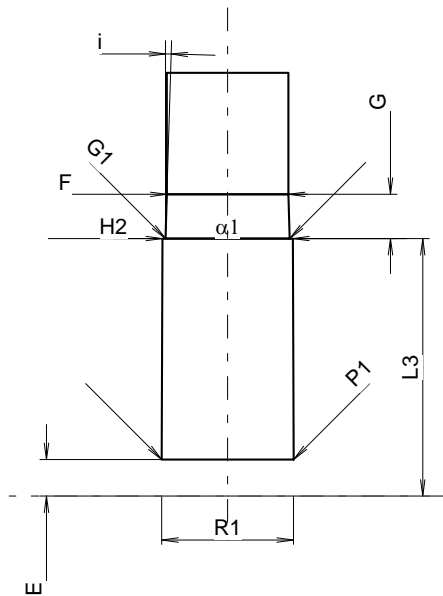
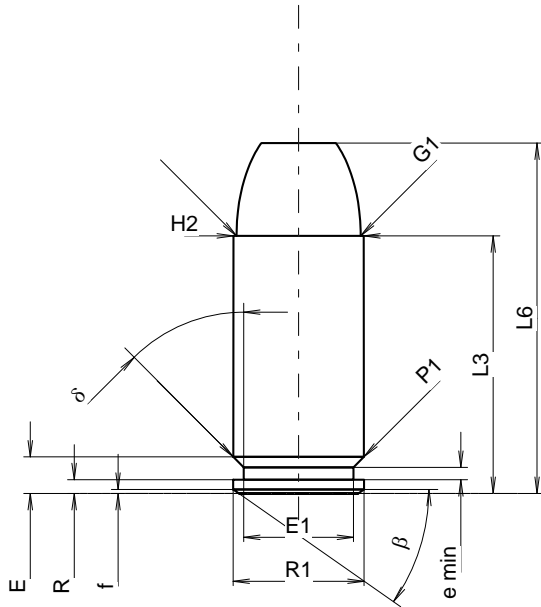
TAB. IV

Date 13-05-22

Country of Origin: CH

Revision

Alternative Names: 450 Schuster



Scale 1.43:1

CARTRIDGE MAXI**Lengths**

L1	=		
L2	=		
L3 ¹⁾	=	23.81	-0.25
L4	=		
L5	=		
L6	=	32.39	

Case Head

R	=	1.27	
R1	=	12.11	
R3	=		
E	=	3.38	
E1	=	10.16	
e min	=	1.14	
delta	=	45°	
f	=	0.38	
beta	=	35°	

Powder Chamber

P1	=	12.09	
P2	=		

Junction Cone

alpha	=		
S	=		
r1 min	=		
r2	=		

Collar

H1	=		
H2 ¹⁾	=	12.04	

Projectile

G1 ¹⁾	=	11.48	
G2	=		
F	=		
L3+G ¹⁾	=	27.90	

Pressures (Energies)**Method Transducer**

Pmax	=	2250 bar	
PK	=	2588 bar	
PE	=	2925 bar	
M	=	12.50	

Miscellaneous Dimensions

Fe ¹⁾⁶⁾	=	0.30	
delta L	=		

CHAMBER MINI**Lengths**

L1	=		
L2	=		
L3 ¹⁾	=	23.81	

Breech

R	=		
R1	=	12.17	
R2	=		
R3	=		
r	=		

Powder Chamber

E	=	3.38	
P1 ¹⁾	=	12.19	
P2	=		

Junction Cone

alpha	=		
S	=		
r1 max	=		
r2	=		

Collar

H1	=		
H2 ¹⁾	=	12.05	

Commencement of Rifling

G1 ¹⁾ *	=	11.48	
G ¹⁾	=	4.09	
alpha l	=	180°	
h	=		
s	=		
i ¹⁾ *	=	1°45'	
w	=		

Barrel

F ¹⁾ *	=	11.23	
Z ¹⁾	=	11.43	

Grooves

b	=	3.73	
N	=	6	
u	=	406.00	
Q	=	101.33	mm ²

Dimensions in << mm >>
 Dimensions and Tolerances for Proof Barrels
 see Appendix CR 1.

Notes: 1) Check for safety reasons
 6) Headspace on Case Mouth
 * Basic dimensions