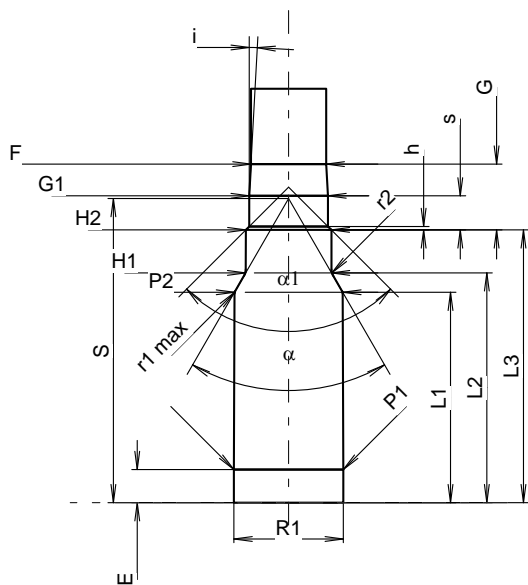
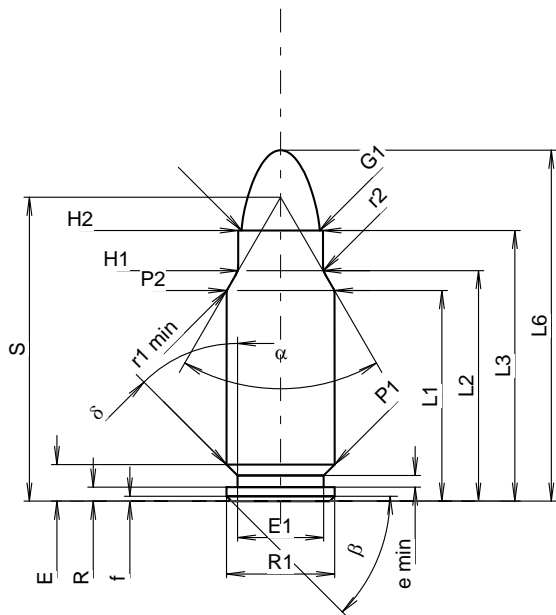


C.I.P.**7,5 FK**

TAB.	IV
Datum	15-05-19
Revision	20-11-10

Ursprungsland: CZ



Maßstab 1.33:1

Maße in << mm >>
Maße und Toleranzen für Messläufe
siehe Anhang CR1.

PATRONE MAXI**Längen**

L1 ¹⁾	=	21.01	-0.20
L2 ¹⁾	=	23.00	-0.20
L3 ¹⁾	=	27.00	
L4	=		
L5	=		
L6	=	35.00	

Hülsenboden

R	=	1.40	
R1	=	10.80	
R3	=		
E	=	3.65	
E1	=	8.60	
e min	=	1.15	
delta	=	45°	
f	=	0.50	
beta	=	45°	

Pulverkammer

P1	=	10.80	
P2 ¹⁾ *	=	10.75	-0.15

Schulterkonus

alpha *	=	60°	
S *	=	30.31	
r1 min	=	0.50	
r2	=	2.00	

Hülsenhals

H1 *	=	8.45	
H2 ¹⁾	=	8.45	

Geschoss

G1 ¹⁾	=	7.80	
G2	=		
F	=		
L3+G ¹⁾	=	33.57	

Drücke (Energien)**Mech. elektr. Wandler**

Pmax	=	3500 bar	
PK	=	4025 bar	
PE	=	4550 bar	
M	=	17.50	

Verschiedene Daten

Fe ¹⁾³⁾	=	0.20	
delta L	=	0.02	

PATRONENLAGER MINI**Längen**

L1	=	20.98	
L2	=	22.92	
L3 ¹⁾	=	27.20	

Stoßboden

R	=		
R1	=	10.90	
R2	=		
R3	=		
r	=		

Pulverkammer

E	=	3.30	
P1 ¹⁾	=	10.90	
P2 *	=	10.80	

Schulterkonus

alpha ¹⁾ *	=	60°	
S *	=	30.33	
r1 max	=	0.50	
r2	=	1.30	

Hülsenhals

H1 *	=	8.56	
H2 ¹⁾	=	8.53	

Geschossübergang

G1 ¹⁾ *	=	7.85	
G ¹⁾	=	6.57	
alpha1	=	90°	
h	=	0.34	
s *	=	3.40	
i ¹⁾ *	=	3°04'11"	
w	=		

Lauf

F ¹⁾ *	=	7.51	
Z ¹⁾	=	7.77	

Züge

b	=	3.75	
N	=	4	
u	=	270.00	
Q	=	46.33	mm ²

Bemerkungen: 1) Kontrolle aus Sicherheitsgründen
3) Verschlussabstand an Schulter
* Grundmaße