

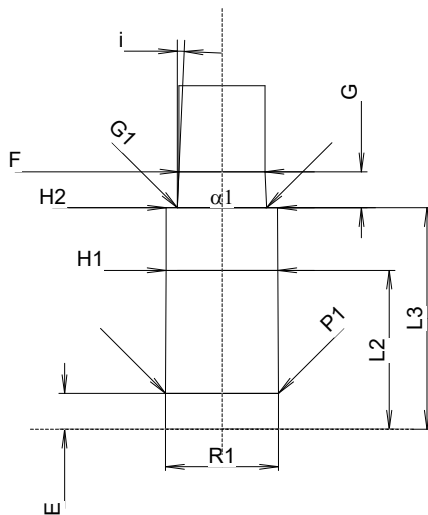
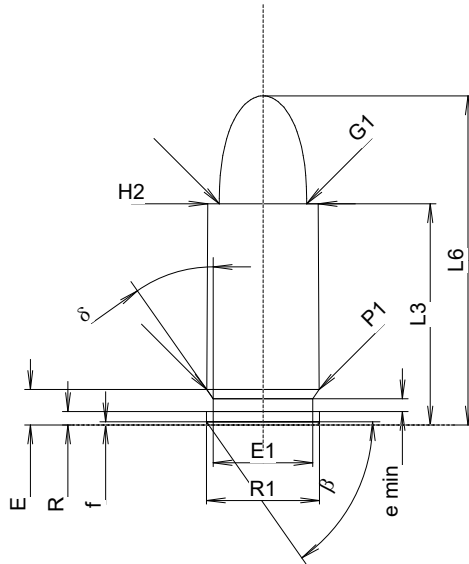
C.I.P.**9 mm FX & CQT**

TAB. IV

Datum 98-01-27

Revision 22-04-26

Ursprungsland: CA



Maßstab 1.5:1

Maße in << mm >>
Maße und Toleranzen für Messläufe
siehe Anhang CR 1.

PATRONE MAXI**Längen**

L1	=		
L2	=		
L3 ¹⁾	=	19.51	-0.25
L4	=		
L5	=		
L6	=	29.03	

Hülsenboden

R	=	1.19	
R1	=	9.96	
R3	=		
E	=	3.14	
E1	=	8.79	
e min	=	1.14	
delta	=	35°	
f	=	0.30	
beta	=	55°	

Pulverkammer

P1	=	9.93	
P2	=		

Schulterkonus

alpha	=		
S	=		
r1 min	=		
r2	=		

Hülsenhals

H1	=		
H2 ¹⁾	=	9.75	

Geschoss

G1 ¹⁾	=	7.72	
G2	=		
F	=		
L3+G ¹⁾	=	22.69	

Drücke (Energien)**Mech. elektr. Wandler**

Pmax	=	350 bar	
PK	=	403 bar	
PE	=	455 bar	
M	=	12.50	

Verschiedene Daten

Fe ¹⁾	=	0.30	
delta L	=		

PATRONENLAGER MINI**Längen**

L1	=		
L2	=	14.00	
L3 ¹⁾	=	19.51	

Stoßboden

R	=		
R1	=	9.96	
R2	=		
R3	=		
r	=		

Pulverkammer

E	=	3.14	
P1 ¹⁾	=	9.94	
P2 *	=		

Schulterkonus

alpha	=		
S	=		
r1 max	=		
r2	=		

Hülsenhals

H1	=	9.86	
H2 ¹⁾	=	9.82	

Geschossübergang

G1 ¹⁾ *	=	7.87	
G ¹⁾	=	3.18	
alpha1 *	=	180°	
h	=		
s	=		
i ¹⁾ *	=	2°31'15"	
w	=		

Lauf

F ¹⁾ *	=	7.59	
Z ¹⁾	=	7.81	

Züge

b	=	1.02	
N	=	6	
u	=	254.00	
Q	=	45.92	mm ²

Bemerkungen: 1) Kontrolle aus Sicherheitsgründen
* Grundmaße