

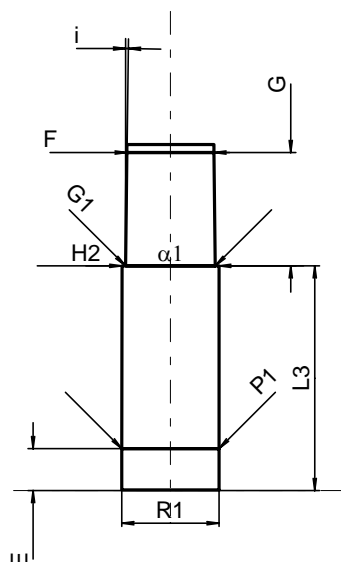
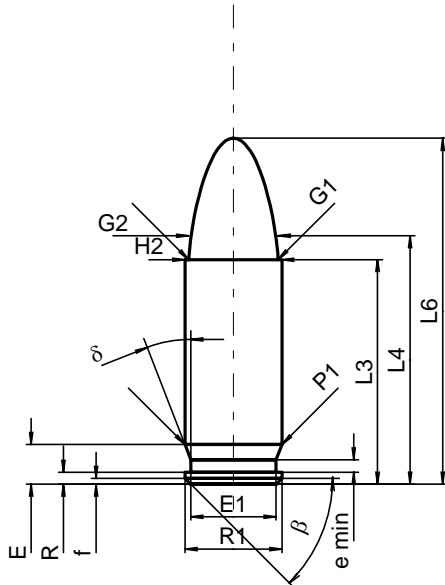
**C.I.P.****7,65 Long**

Ursprungsland: FR

TAB. IV

Datum 92-04-17

Revision 00-06-07



Maßstab 1.5:1

Maße in << mm >>  
Maße und Toleranzen für Messläufe  
siehe Anhang CR 1.

**PATRONE MAXI****Längen**

L1	=		
L2	=		
L3 <sup>1)</sup>	=	19.80	-0.25
L4	=	21.90	
L5	=		
L6	=	30.50	

**Hülsenboden**

R	=	1.05	
R1	=	8.55	
R3	=		
E	=	3.50	
E1	=	7.50	
e min	=	1.10	
delta	=	21°15'02"	
f	=	0.50	
beta	=	45°	

**Pulverkammer**

P1	=	8.55	
P2	=		

**Schulterkonus**

alpha	=		
S	=		
r1 min	=		
r2	=		

**Hülsenhals**

H1	=		
H2 <sup>1)</sup>	=	8.55	

**Geschoss**

G1 <sup>1)</sup>	=	7.88	
G2	=	7.88	
F	=		
L3+G <sup>1)</sup>	=	29.80	

**Drücke (Energien)****Mech. elektr. Wandler**

Pmax	=	1650 bar	
PK	=	1898 bar	
PE	=	2145 bar	
M	=	10.50	

**Verschiedene Daten**

Fe <sup>1)</sup>	=	0.30	
delta L	=		

**PATRONENLAGER MINI****Längen**

L1	=		
L2	=		
L3 <sup>1)</sup>	=	19.80	

**Stoßboden**

R	=	1.10	
R1	=	8.60	
R2	=		
R3	=		
r	=		

**Pulverkammer**

E	=	3.70	
P1 <sup>1)</sup>	=	8.57	
P2	=		

**Schulterkonus**

alpha	=		
S	=		
r1 max	=		
r2	=		

**Hülsenhals**

H1	=		
H2 <sup>1)</sup>	=	8.55	

**Geschossübergang**

G1 <sup>1)*</sup>	=	7.92	
G <sup>1)*</sup>	=	10.00	
alpha1	=	180°	
h	=		
s	=		
i <sup>1)</sup>	=	0°46'25"	
w	=		

**Lauf**

F <sup>1)*</sup>	=	7.65	
Z <sup>1)</sup>	=	7.91	

**Züge**

b	=	4.23	
N	=	4	
u	=	254.00	
Q	=	48.29	mm <sup>2</sup>

Bemerkungen: 1) Kontrolle aus Sicherheitsgründen  
\* Grundmaße