

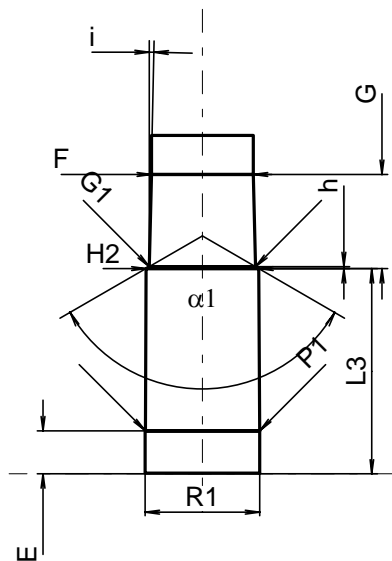
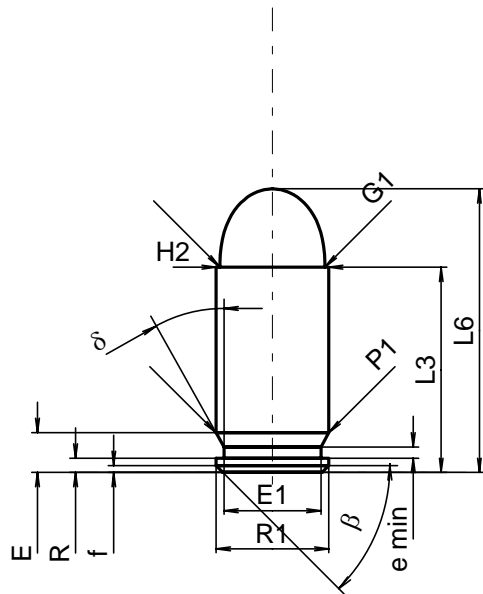
C.I.P.**9 mm Makarov**

Ursprungsland: SU

TAB. IV

Datum 91-09-20

Revision 00-06-07



Maßstab 1.5:1

Maße in << mm >>
Maße und Toleranzen für Messläufe
siehe Anhang CR 1.

PATRONE MAXI**Längen**

L1	=		
L2	=		
L3 ¹⁾	=	18.10	-0.25
L4	=		
L5	=		
L6	=	25.00	

Hülsenboden

R	=	1.25	
R1	=	9.95	
R3	=		
E	=	3.50	
E1	=	8.55	
e min	=	1.00	
δ	=	29°15'	
f	=	0.60	
β	=	45°	

Pulverkammer

P1	=	9.95	
P2	=		

Schulterkonus

α	=		
S	=		
r1 min	=		
r2	=		

Hülsenhals

H1	=		
H2 ¹⁾	=	9.91	

Geschoss

G1 ¹⁾	=	9.27	
G2	=		
F	=		
L3+G ¹⁾	=	26.40	

Drücke (Energien)**Mech. elektr. Wandler**

Pmax	=	1600 bar	
PK	=	1840 bar	
PE	=	2080 bar	
M	=	10.50	

Verschiedene Daten

Fe ¹⁾	=	0.30	
delta L	=		

PATRONENLAGER MINI**Längen**

L1	=		
L2	=		
L3 ¹⁾	=	18.10	

Stoßboden

R	=		
R1	=	10.10	
R2	=		
R3	=		
r	=		

Pulverkammer

E	=	3.80	
P1 ¹⁾	=	10.07	
P2	=		

Schulterkonus

α	=		
S	=		
r1 max	=		
r2	=		

Hülsenhals

H1	=		
H2 ¹⁾	=	9.93	

Geschossübergang

G1 ^{1)*}	=	9.35	
G ^{1)*}	=	8.30	
α1	=	120°	
h*	=	0.17	
s	=		
i ¹⁾	=	1°13'59"	
w	=		

Lauf

F ^{1)*}	=	9.00	
Z ¹⁾	=	9.27	

Züge

b	=	4.50	
N	=	4	
u	=	240.00	
Q	=	66.16	mm ²

Bemerkungen: 1) Kontrolle aus Sicherheitsgründen
* Grundmaße