

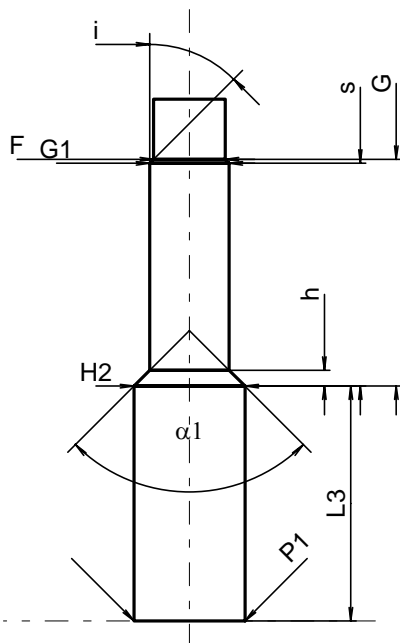
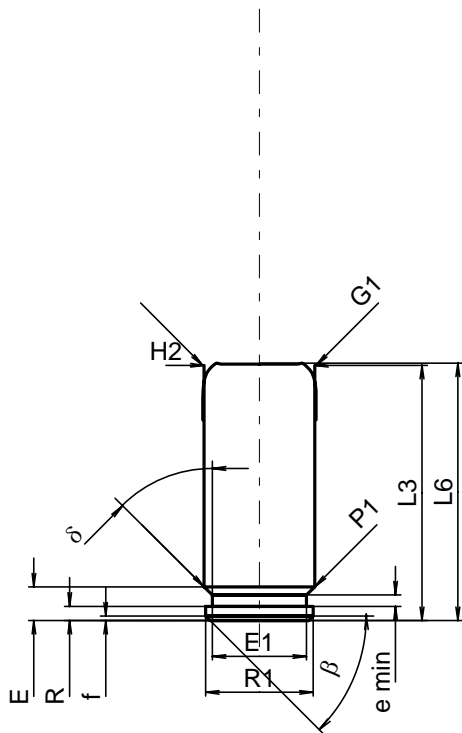
C.I.P.**10 x 22 T**

TAB. IV

Datum 00-12-11

Revision 04-09-27

Ursprungsland: IT



Maßstab 1.5:1

Maße in << mm >>
Maße und Toleranzen für Messläufe
siehe Anhang CR 1.

PATRONE MAXI**Längen**

L1	=		
L2*	=	22.00	
L3 ¹⁾	=	22.50	-0.25
L4	=		
L5	=		
L6	=	22.70	

Hülsenboden

R	=	1.25	
R1	=	9.50	
R3	=		
E	=	2.97	
E1	=	8.30	
e min	=	1.00	
delta	=	40°	
f	=	0.40	
beta	=	45°	

Pulverkammer

P1	=	9.75	
P2	=		

Schulterkonus

alpha	=		
S	=		
r1 min	=		
r2	=		

Hülsenhals

H1	=		
H2 ¹⁾	=	9.75	

Geschoss

G1 ¹⁾	=	10.00	
G2	=		
F	=		
L3+G ¹⁾	=	42.50	

Drücke (Energien)**Mech. elektr. Wandler**

Pmax	=	450 bar	
PK	=	518 bar	
PE	=	585 bar	
M	=	12.50	

Verschiedene Daten

Fe	=	0.30	
delta L	=		

PATRONELAGER MINI**Längen**

L1	=		
L2	=		
L3 ¹⁾	=	20.70	

Stoßboden

R	=		
R1	=		
R2	=		
R3	=		
r	=		

Pulverkammer

E	=		
P1 ¹⁾	=	9.80	
P2	=		

Schulterkonus

alpha	=		
S	=		
r1 max	=		
r2	=		

Hülsenhals

H1	=		
H2 ¹⁾	=	9.80	

Geschossübergang

G1 ^{1)*}	=	7.00	
G ^{1)*}	=	20.00	
alpha1	=	90°	
h	=	1.40	
s*	=	19.65	
i ¹⁾	=	45°	
w	=		

Lauf

F ^{1)*}	=	6.30	
Z	=		

Züge

b	=		
N	=		
u	=		
Q	=	31.17	mm ²

Bemerkungen: 1) Kontrolle aus Sicherheitsgründen
* Grundmaße