

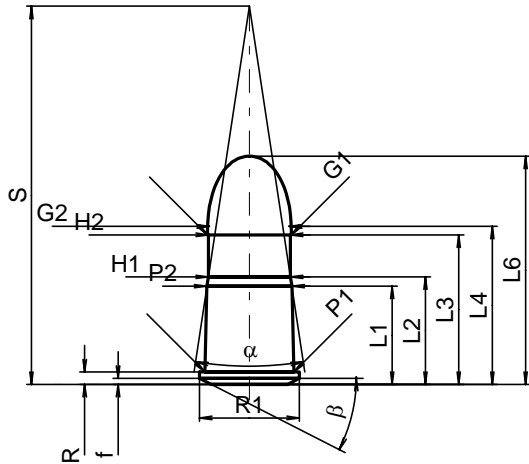
**C.I.P.****10,40 Ord. It.**

TAB. IV

Datum 84-06-14

Revision 00-06-07

Ursprungsland: IT

**PATRONE MAXI****Längen**

L1*	=	13.00
L2*	=	14.22
L3 <sup>1)</sup>	=	19.80
L4	=	20.90
L5	=	
L6	=	30.20

**Hülsenboden**

R <sup>1)</sup>	=	1.65	-0.25
R1	=	13.20	
R3	=		
E	=		
E1	=		
e min	=		
delta	=		
f	=	0.80	
beta	=	27°	

**Pulverkammer**

P1	=	11.80
P2*	=	11.23

**Schulterkonus**

alpha	=	17°14'43"
S	=	50.03
r1 min	=	
r2	=	

**Hülsenhals**

H1*	=	10.86
H2 <sup>1)</sup>	=	10.86

**Geschoss**

G1 <sup>1)</sup>	=	11.10
G2	=	10.55
F	=	
L1+G <sup>1)</sup>	=	21.91

**Drücke (Energien)****Mech. elektr. Wandler**

Pmax	=	630 bar
PK	=	725 bar
PE	=	819 bar
M	=	10.50

**Verschiedene Daten**

Fe <sup>1)</sup>	=	0.25
delta L	=	

**PATRONENLAGER MINI****Längen**

L1	=	
L2	=	
L3 <sup>1)</sup>	=	20.50

**Stoßboden**

R <sup>1)</sup>	=	1.70
R1	=	13.25
R2	=	1.50
R3	=	
r	=	

**Pulverkammer**

E	=	
P1 <sup>1)</sup>	=	11.85
P2	=	

**Schulterkonus**

alpha	=	
S	=	
r1 max	=	
r2	=	

**Hülsenhals**

H1	=	
H2 <sup>1)</sup>	=	11.13

**Geschossübergang**

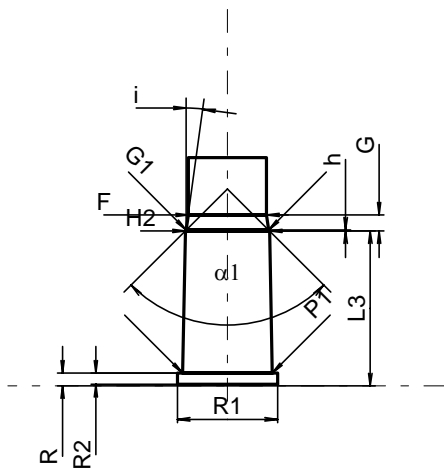
G1 <sup>1)*</sup>	=	10.90
G <sup>1)*</sup>	=	2.11
alpha1	=	90°
h*	=	0.11
s	=	
i <sup>1)</sup>	=	7°49'45"
w	=	

**Lauf**

F <sup>1)*</sup>	=	10.35
Z <sup>1)</sup>	=	10.75

**Züge**

b	=	4.00
N	=	4
u	=	250.00
Q	=	87.42 mm <sup>2</sup>



Maßstab 1:1

Maße in << mm >>  
Maße und Toleranzen für Messläufe  
siehe Anhang CR 1.

Bemerkungen: 1) Kontrolle aus Sicherheitsgründen  
\* Grundmaße