

C.I.P.**6,35 Browning**

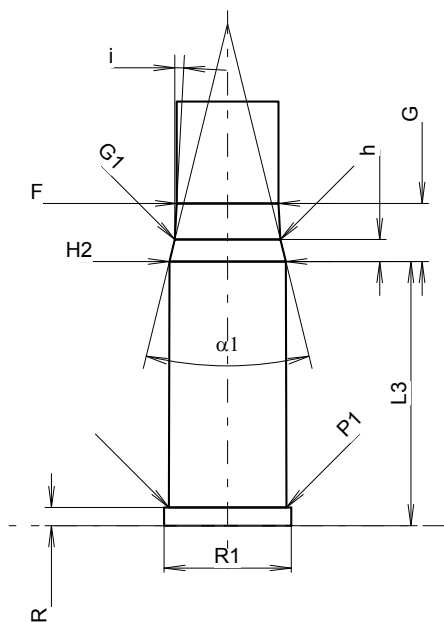
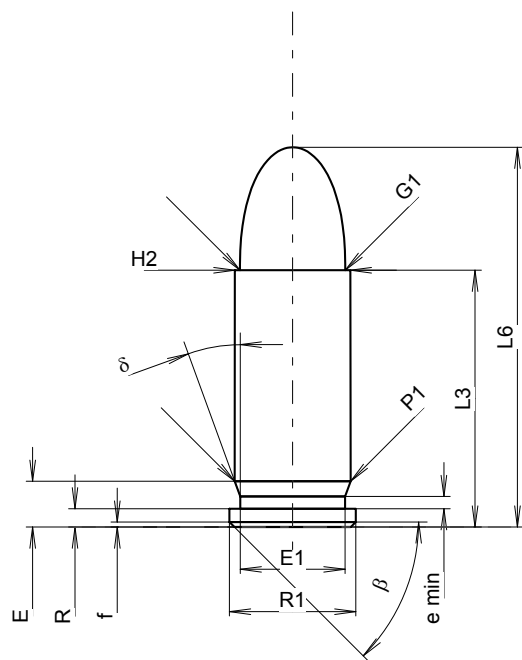
TAB. IV

Datum 84-06-14

Revision 00-06-07

Ursprungsland: BE

Alternative Namen: 25 Auto(matic), 25 ACP



Maßstab 2.18:1

Maße in << mm >>
Maße und Toleranzen für Messläufe
siehe Anhang CR 1.

PATRONE MAXI**Längen**

L1	=	
L2	=	
L3 ¹⁾	=	15.55
L4	=	
L5	=	
L6	=	23.00

Hülsenboden

R ¹⁾	=	1.10	-0.25
R1	=	7.65	
R3	=		
E	=	2.77	
E1	=	6.35	
e min	=	0.75	
delta	=	20°	
f	=	0.30	
beta	=	45°	

Pulverkammer

P1	=	7.02
P2	=	

Schulterkonus

alpha	=	
S	=	
r1 min	=	
r2	=	

Hülsenhals

H1	=	
H2 ¹⁾	=	7.00

Geschoss

G1 ¹⁾	=	6.38
G2	=	
F	=	
L3+G ¹⁾	=	19.07

Drücke (Energien)**Mech. elektr. Wandler**

Pmax	=	1200 bar
PK	=	1380 bar
PE	=	1560 bar
M	=	9.00

Verschiedene Daten

Fe ¹⁾⁴⁾	=	0.30
delta L	=	

PATRONENLAGER MINI**Längen**

L1	=	
L2	=	
L3 ¹⁾	=	16.00

Stoßboden

R ¹⁾	=	1.10
R1	=	7.70
R2	=	
R3	=	
r	=	

Pulverkammer

E	=	
P1 ¹⁾	=	7.12
P2	=	

Schulterkonus

alpha	=	
S	=	
r1 max	=	
r2	=	

Hülsenhals

H1	=	
H2 ¹⁾	=	7.05

Geschossübergang

G1 ¹⁾ *	=	6.40
G ¹⁾ *	=	3.52
alpha1	=	27°30'
h *	=	1.33
s	=	
i ¹⁾	=	3°00'20"
w	=	

Lauf

F ¹⁾ *	=	6.17
Z ¹⁾	=	6.35

Züge

b	=	2.25
N	=	6
u	=	254.00
Q	=	31.14 mm ²

Bemerkungen: 1) Kontrolle aus Sicherheitsgründen
4) Verschlussabstand an Rand
* Grundmaße