

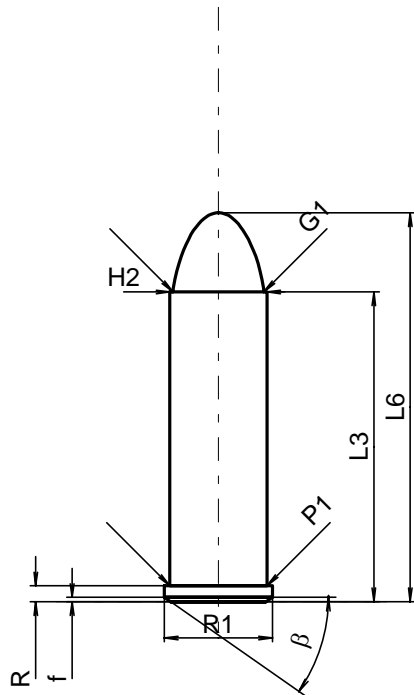
C.I.P.**32 H&R Mag.**

TAB. IV

Datum 86-02-25

Revision 00-06-07

Ursprungsland: US

**PATRONE MAXI****Längen**

L1	=	
L2	=	
L3 ¹⁾	=	27.31
L4	=	
L5	=	
L6	=	34.29

Hülsenboden

R ¹⁾	=	1.40	-0.25
R1	=	9.53	
R3	=		
E	=		
E1	=		
e min	=		
delta	=		
f	=	0.38	
beta	=	35°	

Pulverkammer

P1	=	8.56
P2	=	

Schulterkonus

alpha	=	
S	=	
r1 min	=	
r2	=	

Hülsenhals

H1	=	
H2 ¹⁾	=	8.56

Geschoss

G1 ¹⁾	=	8.00
G2	=	
F	=	
L3+G ¹⁾	=	38.45

Drücke (Energien)**Mech. elektr. Wandler**

Pmax	=	1400 bar
PK	=	1610 bar
PE	=	1820 bar
M	=	12.50

Verschiedene Daten

Fe ¹⁾	=	0.25
delta L	=	

PATRONENLAGER MINI**Längen**

L1	=	
L2	=	
L3 ¹⁾	=	27.84

Stoßboden

R ¹⁾	=	1.42
R1	=	9.63
R2	=	
R3	=	
r	=	

Pulverkammer

E	=	
P1 ¹⁾	=	8.67
P2	=	

Schulterkonus

alpha	=	
S	=	
r1 max	=	
r2	=	

Hülsenhals

H1	=	
H2 ¹⁾	=	8.62

Geschossübergang

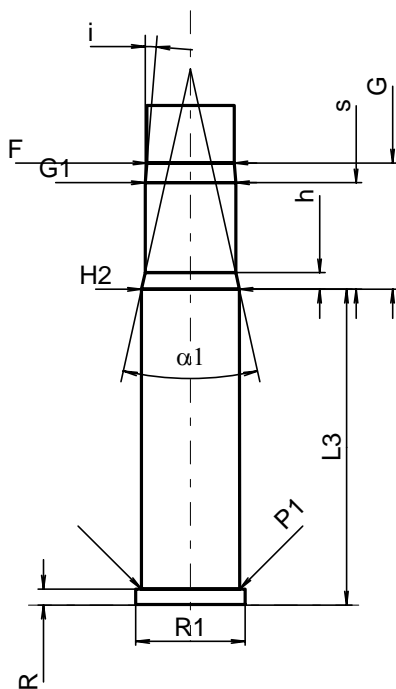
G1 ^{1)*}	=	7.98
G ¹⁾	=	11.14
alpha1*	=	25°
h	=	1.47
s	=	9.40
i ^{1)*}	=	4°35'
w	=	

Lauf

F ^{1)*}	=	7.70
Z ¹⁾	=	7.92

Züge

b	=	2.41
N	=	5
u	=	406.00
Q	=	47.91 mm ²



Maßstab 1.5:1

Maße in << mm >>
Maße und Toleranzen für Messläufe
siehe Anhang CR 1.

Bemerkungen: 1) Kontrolle aus Sicherheitsgründen
* Grundmaße