

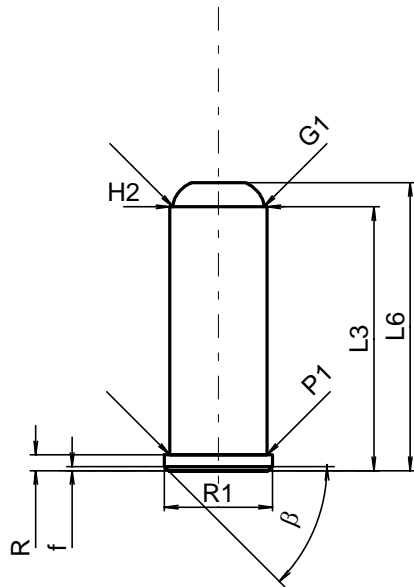
**C.I.P.****32 S&W Long Wad Cut.**

TAB. IV

Datum 84-06-14

Revision 00-06-07

Ursprungsland: DE/FI

**PATRONE MAXI****Längen**

L1	=	
L2	=	
L3 <sup>1)</sup>	=	23.27
L4	=	
L5	=	
L6	=	25.40

**Hülsenboden**

R <sup>1)</sup>	=	1.40	-0.25
R1	=	9.53	
R3	=		
E	=		
E1	=		
e min	=		
δ	=		
f	=	0.38	
β	=	45°	

**Pulverkammer**

P1	=	8.56
P2	=	

**Schulterkonus**

α	=	
S	=	
r1 min	=	
r2	=	

**Hülsenhals**

H1	=	
H2 <sup>1)</sup>	=	8.56

**Geschoss**

G1 <sup>1)</sup>	=	8.00
G2	=	
F	=	
L3+G <sup>1)</sup>	=	26.31

**Drücke (Energien)****Mech. elektr. Wandler**

Pmax	=	1550 bar
PK	=	1783 bar
PE	=	2015 bar
M	=	8.00

**Verschiedene Daten**

Fe <sup>1)</sup>	=	0.25
delta L	=	

**PATRONENLAGER MINI****Längen**

L1	=	
L2	=	
L3 <sup>1)</sup>	=	23.90

**Stoßboden**

R <sup>1)</sup>	=	1.40
R1	=	9.63
R2	=	
R3	=	
r	=	

**Pulverkammer**

E	=	
P1 <sup>1)</sup>	=	8.59
P2	=	

**Schulterkonus**

α	=	
S	=	
r1 max	=	
r2	=	

**Hülsenhals**

H1	=	
H2 <sup>1)</sup>	=	8.57

**Geschossübergang**

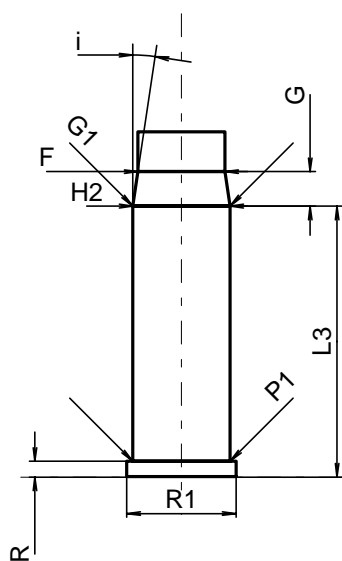
G1 <sup>1)*</sup>	=	8.57
G <sup>1)*</sup>	=	3.04
α1	=	
h	=	
s*	=	
i <sup>1)</sup>	=	8°30'
w	=	

**Lauf**

F <sup>1)*</sup>	=	7.66
Z <sup>1)</sup>	=	7.92

**Züge**

b	=	2.41
N	=	5
u	=	476.00
Q	=	47.87 mm <sup>2</sup>



Maßstab 1.5:1

Maße in << mm >>  
Maße und Toleranzen für Messläufe  
siehe Anhang CR 1.

Bemerkungen: 1) Kontrolle aus Sicherheitsgründen  
\* Grundmaße