

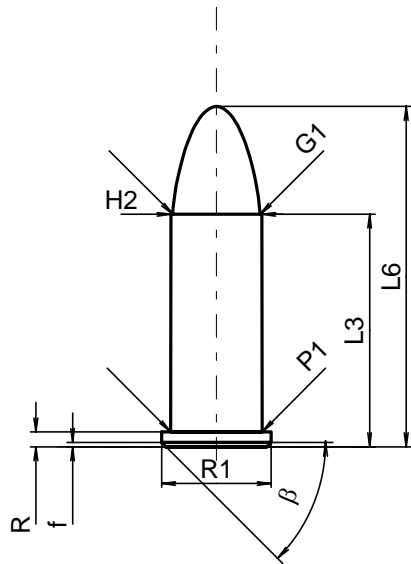
C.I.P.**320 Long**

TAB. IV

Datum 84-06-14

Revision 00-06-07

Ursprungsland: GB

**PATRONE MAXI****Längen**

L1	=	
L2	=	
L3 ¹⁾	=	20.50
L4	=	
L5	=	
L6	=	30.00

Hülsenboden

R ¹⁾	=	1.32	-0.25
R1	=	9.65	
R3	=		
E	=		
E1	=		
e min	=		
delta	=		
f	=	0.38	
beta	=	45°	

Pulverkammer

P1	=	8.05
P2	=	

Schulterkonus

alpha	=	
S	=	
r1 min	=	
r2	=	

Hülsenhals

H1	=	
H2 ¹⁾	=	8.00

Geschoss

G1 ¹⁾	=	7.70
G2	=	
F	=	
L3+G ¹⁾	=	22.16

Drücke (Energien)**Mech. elektr. Wandler**

Pmax	=	1000 bar
PK	=	1150 bar
PE	=	1300 bar
M	=	12.50

Verschiedene Daten

Fe ¹⁾	=	0.25
delta L	=	

PATRONELAGER MINI**Längen**

L1	=	+0.381
L2	=	+0.381
L3 ¹⁾	=	23.00 +0.381

Stoßboden

R ¹⁾	=	1.40
R1	=	9.70 +0.051
R2	=	
R3	=	
r	=	

Pulverkammer

E	=	
P1 ¹⁾	=	8.10
P2	=	

Schulterkonus

alpha	=	
S	=	
r1 max	=	
r2	=	+0.762

Hülsenhals

H1	=	+0.051
H2 ¹⁾	=	8.10 +0.051

Geschossübergang

G1 ^{1)*}	=	7.90 +0.051
G ^{1)*}	=	1.66
alpha1	=	90°
h*	=	0.10
s	=	
i ¹⁾	=	4°35'
w	=	

Lauf

F ^{1)*}	=	7.65
Z ¹⁾	=	7.90

Züge

b	=	2.70 +0.051
N	=	6
u	=	450.00
Q	=	48.03 mm ²

Maßstab 1.5:1

Maße in << mm >>
Maße und Toleranzen für Messläufe
siehe Anhang CR 1.

Bemerkungen: 1) Kontrolle aus Sicherheitsgründen
* Grundmaße