

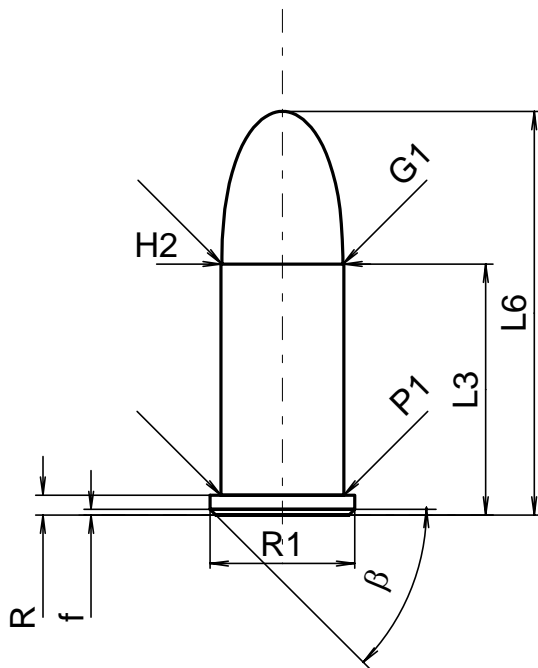
C.I.P.**320 Short**

Ursprungsland: GB

TAB. IV

Datum 84-06-14

Revision 00-06-07

**PATRONE MAXI****Längen**

L1	=	
L2	=	
L3 ¹⁾	=	16.60
L4	=	
L5	=	
L6	=	26.70

Hülsenboden

R ¹⁾	=	1.32	-0.25
R1	=	9.55	
R3	=		
E	=		
E1	=		
e min	=		
delta	=		
f	=	0.38	
beta	=	45°	

Pulverkammer

P1	=	8.12
P2	=	

Schulterkonus

alpha	=	
S	=	
r1 min	=	
r2	=	

Hülsenhals

H1	=	
H2 ¹⁾	=	8.12

Geschoss

G1 ¹⁾	=	8.00
G2	=	
F	=	
L3+G ¹⁾	=	18.86

Drücke (Energien)**Mech. elektr. Wandler**

Pmax	=	1200 bar
PK	=	1380 bar
PE	=	1560 bar
M	=	10.50

Verschiedene Daten

Fe ¹⁾	=	0.25
delta L	=	

PATRONENLAGER MINI**Längen**

L1	=	
L2	=	
L3 ¹⁾	=	17.00

Stoßboden

R ¹⁾	=	1.40
R1	=	9.60
R2	=	
R3	=	
r	=	

Pulverkammer

E	=	
P1 ¹⁾	=	8.15
P2	=	

Schulterkonus

alpha	=	
S	=	
r1 max	=	
r2	=	

Hülsenhals

H1	=	
H2 ¹⁾	=	8.15

Geschossübergang

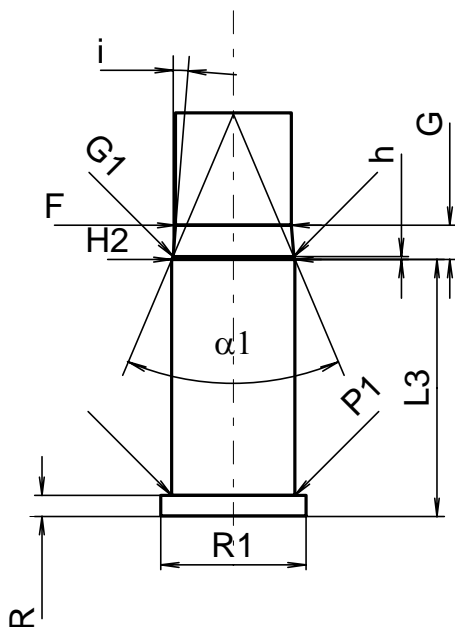
G1 ^{1)*}	=	7.98
G ^{1)*}	=	2.26
alpha1	=	46°
h*	=	0.20
s	=	
i ¹⁾	=	4°35'
w	=	

Lauf

F ^{1)*}	=	7.65
Z ¹⁾	=	7.90

Züge

b	=	2.70
N	=	6
u	=	450.00
Q	=	48.03 mm ²



Maßstab 2:1

Maße in << mm >>
Maße und Toleranzen für Messläufe
siehe Anhang CR 1.

Bemerkungen: 1) Kontrolle aus Sicherheitsgründen
* Grundmaße