

C.I.P.**38 Special (carb)**

TAB.	IV
Datum	84-06-14
Revision	95-05-10

Ursprungsland: US

PATRONE MAXI**Längen**

L1	=
L2	=
L3	=
L4	=
L5	=
L6	=

Hülsenboden

R	=
R1	=
R3	=
E	=
E1	=
e min	=
δ	=
f	=
β	=

Pulverkammer

P1	=
P2	=

Schulterkonus

α	=
S	=
r1 min	=
r2	=

Hülsenhals

H1	=
H2	=

Geschoss

G1	=
G2	=
F	=
L3+G	=

Drücke (Energien)**Mech. elektr. Wandler**

Pmax	=	1500 bar
PK	=	1725 bar
PE	=	1950 bar
M	=	12.50

Verschiedene Daten

Fe ¹⁾	=	0.15
delta L	=	

PATRONENLAGER MINI**Längen**

L1	=	
L2	=	
L3 ¹⁾	=	29.54

Stoßboden

R ¹⁾	=	1.50
R1	=	11.28
R2	=	
R3	=	
r	=	

Pulverkammer

E	=	
P1 ¹⁾	=	9.68
P2	=	

Schulterkonus

α	=
S	=
r1 max	=
r2	=

Hülsenhals

H1	=	
H2 ¹⁾	=	9.65

Geschossübergang

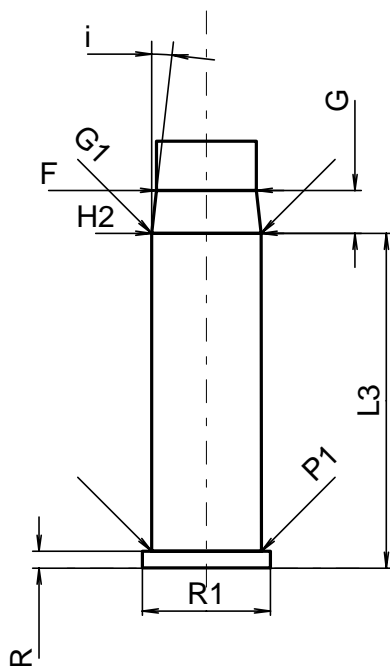
G1 ^{1)*}	=	9.65
G ¹⁾	=	3.77
$\alpha 1^*$	=	
h	=	
s*	=	
i ^{1)*}	=	6°30'
w	=	

Lauf

F ^{1)*}	=	8.79
Z ¹⁾	=	9.02

Züge

b	=	2.67
N	=	6
u	=	476.00
Q	=	62.55 mm ²



Maßstab 1.5:1

Maße in << mm >>
Maße und Toleranzen für Messläufe
siehe Anhang .

Bemerkungen: 1) Kontrolle aus Sicherheitsgründen
* Grundmaße