

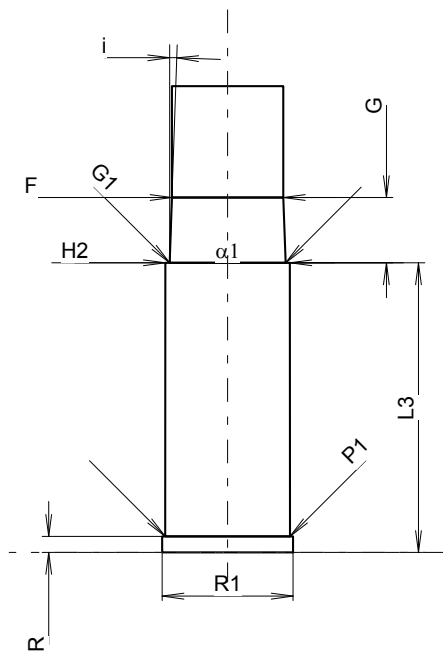
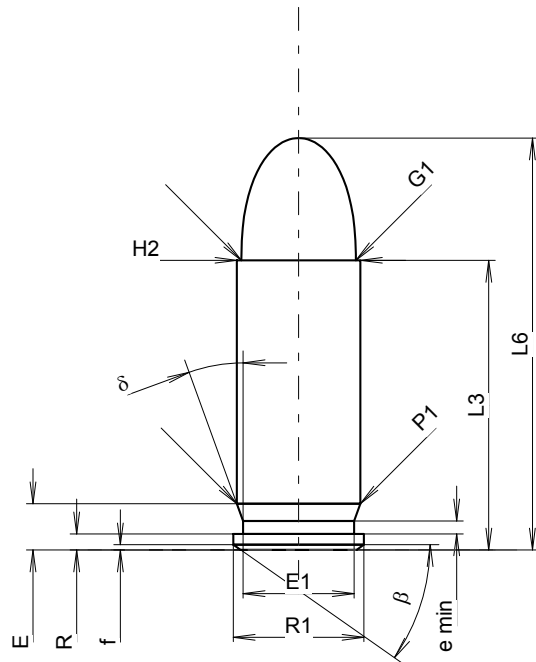
C.I.P.**38 Super Auto**

TAB. IV

Datum 84-06-14

Revision 08-09-23

Ursprungsland: US



Maßstab 1.68:1

Maße in << mm >>
Maße und Toleranzen für Messläufe
siehe Anhang CR 1.

PATRONE MAXI**Längen**

L1	=	
L2	=	
L3 ¹⁾	=	22.86
L4	=	
L5	=	
L6	=	32.51

Hülsenboden

R ¹⁾	=	1.27	-0.25
R1	=	10.31	
R3	=		
E	=	3.65	
E1	=	8.76	
e min	=	1.02	
delta	=	20°	
f	=	0.41	
beta	=	35°	

Pulverkammer

P1	=	9.75
P2	=	

Schulterkonus

alpha	=	
S	=	
r1 min	=	
r2	=	

Hülsenhals

H1	=	
H2 ¹⁾	=	9.75

Geschoss

G1 ¹⁾	=	9.04
G2	=	
F	=	
L3+G ¹⁾	=	28.01

Drücke (Energien)**Mech. elektr. Wandler**

Pmax	=	2300 bar
PK	=	2645 bar
PE	=	2990 bar
M	=	12.50

Verschiedene Daten

Fe ¹⁾⁶⁾	=	0.30
delta L	=	

PATRONENLAGER MINI**Längen**

L1	=	
L2	=	
L3 ¹⁾	=	22.86

Stoßboden

R ¹⁾	=	1.27
R1	=	10.34
R2	=	
R3	=	
r	=	

Pulverkammer

E	=	
P1 ¹⁾	=	9.85
P2	=	

Schulterkonus

alpha	=	
S	=	
r1 max	=	
r2	=	

Hülsenhals

H1	=	
H2 ¹⁾	=	9.83

Geschossübergang

G1 ¹⁾ *	=	9.15
G ¹⁾	=	5.15
alpha1 *	=	180°
h	=	
s	=	
i ¹⁾ *	=	2°
w	=	

Lauf

F ¹⁾ *	=	8.79
Z ¹⁾	=	9.02

Züge

b	=	3.07
N	=	6
u	=	406.00
Q	=	62.85 mm ²

Bemerkungen: 1) Kontrolle aus Sicherheitsgründen
6) Verschlussabstand an Hülsenmund
* Grundmaße