

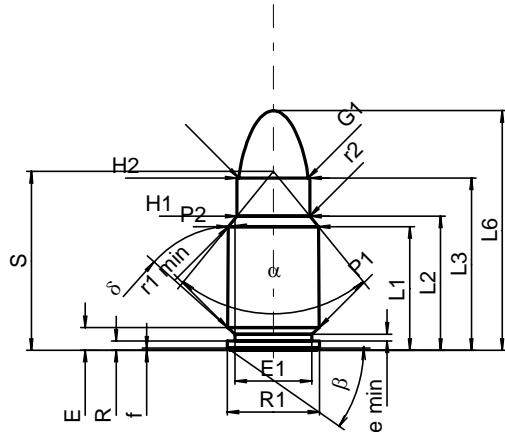
**C.I.P.****38-45 ACP**

TAB. IV

Datum 84-06-14

Revision 00-06-07

Ursprungsland: US

**PATRONE MAXI****Längen**

L1 <sup>1)</sup>	=	16.35	-0.20
L2 <sup>1)</sup>	=	17.75	-0.20
L3 <sup>1)</sup>	=	22.80	
L4	=		
L5	=		
L6	=	31.70	

**Hülsenboden**

R	=	1.24	
R1	=	12.19	
R3	=		
E	=	3.01	
E1	=	10.15	
e min	=	0.90	
delta	=	45°	
f	=	0.30	
beta	=	35°	

**Pulverkammer**

P1	=	12.10	
P2 <sup>1)*</sup>	=	11.94	-0.20

**Schulterkonus**

alpha*	=	78°30'	
S*	=	23.66	
r1 min	=	1.20	
r2	=	1.20	

**Hülsenhals**

H1*	=	9.65	
H2 <sup>1)</sup>	=	9.65	

**Geschoss**

G1 <sup>1)</sup>	=	9.12	
G2	=		
F	=		
L3+G <sup>1)</sup>	=	28.16	

**Drücke (Energien)****Mech. elektr. Wandler**

Pmax	=	2350 bar	
PK	=	2703 bar	
PE	=	3055 bar	
M	=	12.50	

**Verschiedene Daten**

Fe <sup>1)</sup>	=	0.20	
delta L	=		

**PATRONENLAGER MINI****Längen**

L1	=	16.33	
L2	=	17.72	
L3 <sup>1)</sup>	=	23.10	

**Stoßboden**

R	=	1.24	
R1	=	12.22	
R2	=		
R3	=		
r	=		

**Pulverkammer**

E	=	3.01	
P1 <sup>1)</sup>	=	12.15	
P2*	=	11.98	

**Schulterkonus**

alpha <sup>1)*</sup>	=	78°30'	
S*	=	23.66	
r1 max	=	1.20	
r2	=	1.50	

**Hülsenhals**

H1*	=	9.70	
H2 <sup>1)</sup>	=	9.68	

**Geschossübergang**

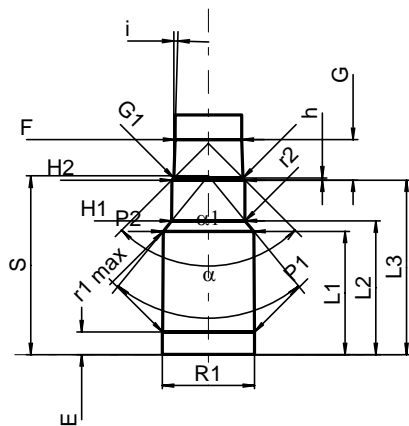
G1 <sup>1)*</sup>	=	9.13	
G <sup>1)</sup>	=	5.36	
alpha1*	=	90°	
h	=	0.28	
s	=		
i <sup>1)*</sup>	=	1°38'05"	
w	=		

**Lauf**

F <sup>1)*</sup>	=	8.84	
Z <sup>1)</sup>	=	9.09	

**Züge**

b	=	2.80	
N	=	6	
u	=	475.00	
Q	=	63.51	mm <sup>2</sup>



Maßstab 1:1

Maße in << mm >>  
Maße und Toleranzen für Messläufe  
siehe Anhang CR 1.

Bemerkungen: 1) Kontrolle aus Sicherheitsgründen  
\* Grundmaße