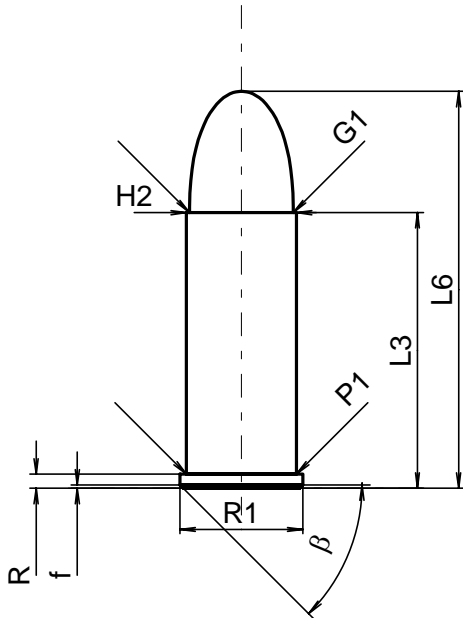


C.I.P.**380 Long**

TAB.	IV
Datum	84-06-14
Revision	00-06-07

Ursprungsland: GB

**PATRONE MAXI****Längen**

L1	=	
L2	=	
L3 ¹⁾	=	24.30
L4	=	
L5	=	
L6	=	35.00

Hülsenboden

R ¹⁾	=	1.25	-0.25
R1	=	10.85	
R3	=		
E	=		
E1	=		
e min	=		
delta	=		
f	=	0.30	
beta	=	45°	

Pulverkammer

P1	=	9.70
P2	=	

Schulterkonus

alpha	=	
S	=	
r1 min	=	
r2	=	

Hülsenhals

H1	=	
H2 ¹⁾	=	9.70

Geschoss

G1 ¹⁾	=	9.15
G2	=	
F	=	
L3+G ¹⁾	=	26.79

Drücke (Energien)**Mech. elektr. Wandler**

Pmax	=	770 bar
PK	=	886 bar
PE	=	1001 bar
M	=	12.50

Verschiedene Daten

Fe ¹⁾	=	0.25
delta L	=	

PATRONENLAGER MINI**Längen**

L1	=	
L2	=	
L3 ¹⁾	=	24.50

Stoßboden

R ¹⁾	=	1.25
R1	=	10.90
R2	=	
R3	=	
r	=	

Pulverkammer

E	=	
P1 ¹⁾	=	9.75
P2	=	

Schulterkonus

alpha	=	
S	=	
r1 max	=	
r2	=	

Hülsenhals

H1	=	
H2 ¹⁾	=	9.73

Geschossübergang

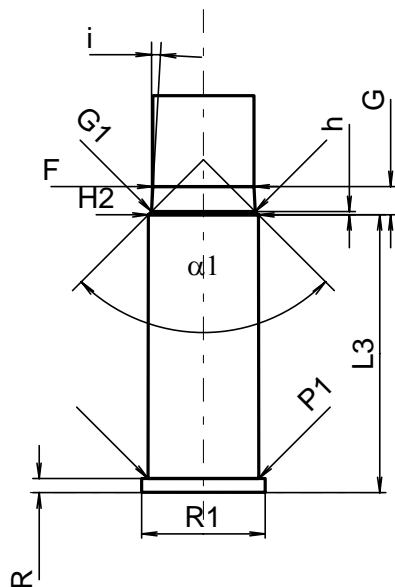
G1 ^{1)*}	=	9.15
G ^{1)*}	=	2.49
alpha1	=	90°
h*	=	0.29
s	=	
i ¹⁾	=	3°15'07"
w	=	

Lauf

F ^{1)*}	=	8.90
Z ¹⁾	=	9.13

Züge

b	=	2.40
N	=	6
u	=	500.00
Q	=	63.89 mm ²



Maßstab 1.5:1

Maße in << mm >>
Maße und Toleranzen für Messläufe
siehe Anhang CR 1.

Bemerkungen: 1) Kontrolle aus Sicherheitsgründen
* Grundmaße