

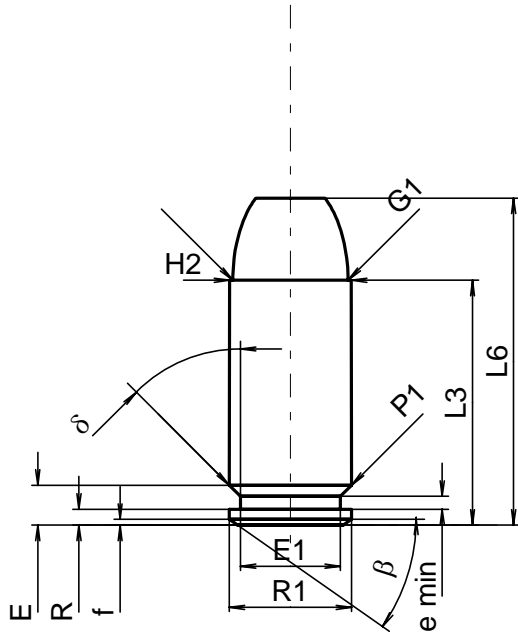
C.I.P.**40 S&W**

TAB. IV

Datum 90-02-01

Revision 00-06-07

Ursprungsland: US

**PATRONE MAXI****Längen**

L1	=		
L2	=		
L3 ¹⁾	=	21.59	-0.25
L4	=		
L5	=		
L6	=	28.83	

Hülsenboden

R	=	1.40	
R1	=	10.77	
R3	=		
E	=	3.52	
E1	=	8.81	
e min	=	1.14	
δ	=	45°	
f	=	0.51	
β	=	35°	

Pulverkammer

P1	=	10.77	
P2	=		

Schulterkonus

α	=		
S	=		
r1 min	=		
r2	=		

Hülsenhals

H1	=		
H2 ¹⁾	=	10.74	

Geschoss

G1 ¹⁾	=	10.17	
G2	=		
F	=		
L3+G ¹⁾	=	30.42	

Drücke (Energien)**Mech. elektr. Wandler**

Pmax	=	2250 bar	
PK	=	2588 bar	
PE	=	2925 bar	
M	=	10.50	

Verschiedene Daten

Fe ¹⁾	=	0.30	
delta L	=		

PATRONENLAGER MINI**Längen**

L1	=		
L2	=		
L3 ¹⁾	=	21.59	

Stoßboden

R	=		
R1	=	10.88	
R2	=		
R3	=		
r	=		

Pulverkammer

E	=	5.08	
P1 ¹⁾	=	10.86	
P2	=		

Schulterkonus

α	=		
S	=		
r1 max	=		
r2	=		

Hülsenhals

H1	=		
H2 ¹⁾	=	10.77	

Geschossübergang

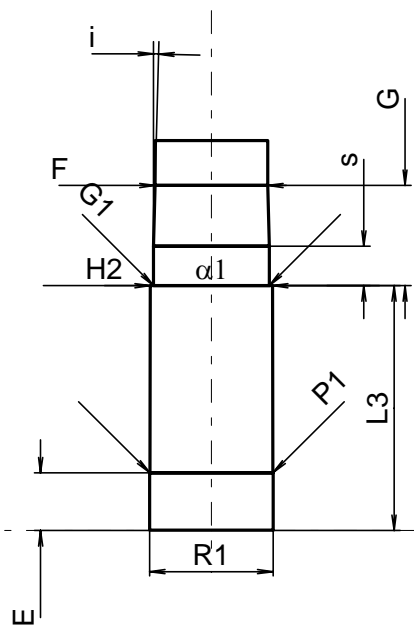
G1 ^{1)*}	=	10.19	
G ¹⁾	=	8.83	
α1 [*]	=	180°	
h	=		
s	=	3.48	
i ^{1)*}	=	1°30'	
w	=		

Lauf

F ^{1)*}	=	9.91	
Z ¹⁾	=	10.17	

Züge

b	=	3.05	
N	=	6	
u	=	406.00	
Q	=	79.55	mm ²



Maßstab 1.5:1

Maße in << mm >>
Maße und Toleranzen für Messläufe
siehe Anhang CR 1.

Bemerkungen: 1) Kontrolle aus Sicherheitsgründen
* Grundmaße