

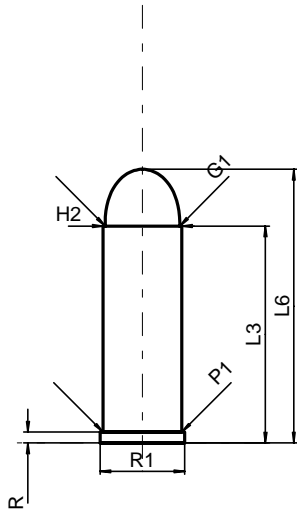
C.I.P.**41 Long Colt**

Ursprungsland: US

TAB. IV

Datum 84-06-14

Revision 00-06-07

**PATRONE MAXI****Längen**

L1	=	
L2	=	
L3 ¹⁾	=	28.70
L4	=	
L5	=	
L6	=	36.19

Hülsenboden

R ¹⁾	=	1.45	-0.25
R1	=	11.18	
R3	=		
E	=		
E1	=		
e min	=		
δ	=		
f	=		
β	=		

Pulverkammer

P1	=	10.43
P2	=	

Schulterkonus

α	=	
S	=	
r1 min	=	
r2	=	

Hülsenhals

H1	=	
H2 ¹⁾	=	10.39

Geschoss

G1 ¹⁾	=	9.86
G2	=	
F	=	
L3+G ¹⁾	=	31.29

Drücke (Energien)**Mech. elektr. Wandler**

Pmax	=	900 bar
PK	=	1035 bar
PE	=	1170 bar
M	=	12.50

Verschiedene Daten

Fe ¹⁾	=	0.25
delta L	=	

PATRONE NLAGER MINI**Längen**

L1	=	
L2	=	
L3 ¹⁾	=	39.83

Stoßboden

R ¹⁾	=	1.52
R1	=	11.28
R2	=	
R3	=	
r	=	

Pulverkammer

E	=	
P1 ¹⁾	=	10.49
P2	=	

Schulterkonus

α	=	
S	=	
r1 max	=	
r2	=	

Hülsenhals

H1	=	
H2 ¹⁾	=	10.42

Geschossübergang

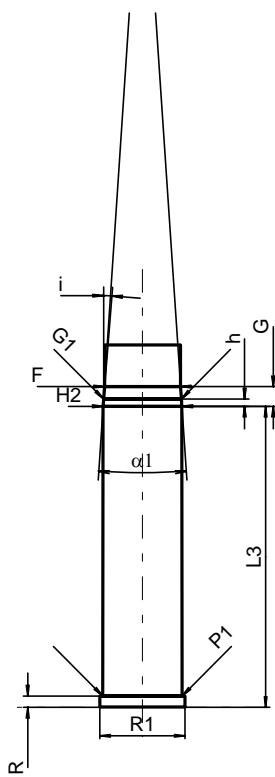
G1 ^{1)*}	=	10.29
G ¹⁾	=	2.59
α1 [*]	=	7°40'12"
h	=	0.97
s	=	
i ^{1)*}	=	4°35'
w	=	

Lauf

F ^{1)*}	=	10.03
Z ¹⁾	=	10.19

Züge

b	=	3.61
N	=	6
u	=	406.00
Q	=	80.78 mm ²



Maßstab 1:1

Maße in << mm >>
Maße und Toleranzen für Messläufe
siehe Anhang .

Bemerkungen: 1) Kontrolle aus Sicherheitsgründen
* Grundmaße