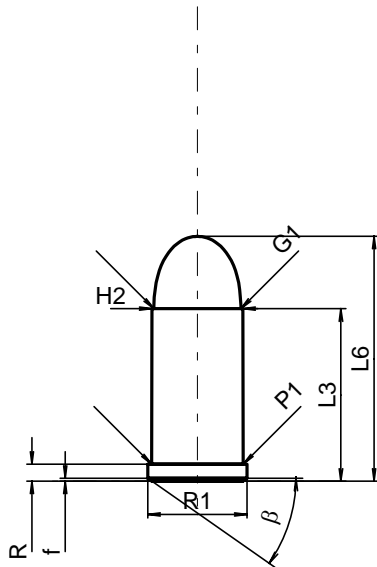


C.I.P.**45 Auto Rim**

Ursprungsland: US

TAB.	IV
Datum	84-06-14
Revision	00-06-07

**PATRONE MAXI****Längen**

L1	=	
L2	=	
L3 ¹⁾	=	22.81
L4	=	
L5	=	
L6	=	32.39

Hülsenboden

R ¹⁾	=	2.26	-0.25
R1	=	13.11	
R3	=		
E	=		
E1	=		
e min	=		
delta	=		
f	=	0.38	
beta	=	35°	

Pulverkammer

P1	=	12.09
P2	=	

Schulterkonus

alpha	=	
S	=	
r1 min	=	
r2	=	

Hülsenhals

H1	=	
H2 ¹⁾	=	11.99

Geschoss

G1 ¹⁾	=	11.48
G2	=	
F	=	
L3+G ¹⁾	=	44.77

Drücke (Energien)**Mech. elektr. Wandler**

Pmax	=	1200 bar
PK	=	1380 bar
PE	=	1560 bar
M	=	12.50

Verschiedene Daten

Fe ¹⁾	=	0.25
delta L	=	

PATRONENLAGER MINI**Längen**

L1	=	
L2	=	
L3 ¹⁾	=	22.86

Stoßboden

R ¹⁾	=	2.29
R1	=	13.21
R2	=	
R3	=	
r	=	

Pulverkammer

E	=	
P1 ¹⁾	=	12.18
P2	=	

Schulterkonus

alpha	=	
S	=	
r1 max	=	
r2	=	

Hülsenhals

H1	=	
H2 ¹⁾	=	12.01

Geschossübergang

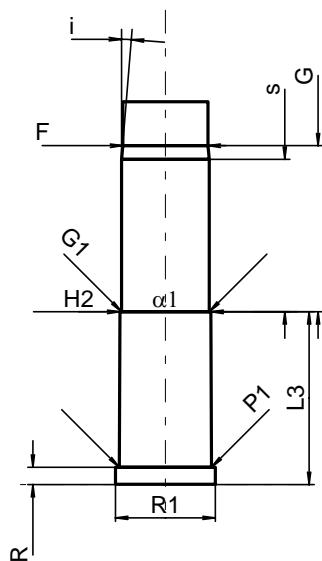
G1 ^{1)*}	=	11.57
G ¹⁾	=	21.96
alpha ¹⁾ *	=	180°
h	=	
s	=	20.15
i ^{1)*}	=	4°35'
w	=	

Lauf

F ^{1)*}	=	11.28
Z ¹⁾	=	11.46

Züge

b	=	3.96
N	=	6
u	=	406.00
Q	=	102.12 mm ²



Maßstab 1:1

Maße in << mm >>
Maße und Toleranzen für Messläufe
siehe Anhang CR 1.

Bemerkungen: 1) Kontrolle aus Sicherheitsgründen
* Grundmaße