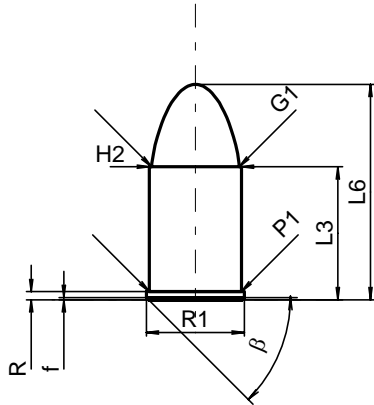


C.I.P.**450 Short**

Ursprungsland: GB

TAB. IV**Datum 84-06-14****Revision 00-06-07****PATRONE MAXI****Längen**

L1	=	
L2	=	
L3 ¹⁾	=	17.60
L4	=	
L5	=	
L6	=	28.50

Hülsenboden

R ¹⁾	=	1.10	-0.25
R1	=	12.95	
R3	=		
E	=		
E1	=		
e min	=		
delta	=		
f	=	0.30	
beta	=	45°	

Pulverkammer

P1	=	12.18
P2	=	

Schulterkonus

alpha	=	
S	=	
r1 min	=	
r2	=	

Hülsenhals

H1	=	
H2 ¹⁾	=	12.17

Geschoss

G1 ¹⁾	=	11.58
G2	=	
F	=	
L3+G ¹⁾	=	20.27

Drücke (Energien)**Mech. elektr. Wandler**

Pmax	=	720 bar
PK	=	828 bar
PE	=	936 bar
M	=	8.00

Verschiedene Daten

Fe ¹⁾	=	0.25
delta L	=	

PATRONENLAGER MINI**Längen**

L1	=	
L2	=	
L3 ¹⁾	=	17.80

Stoßboden

R ¹⁾	=	1.10
R1	=	13.00
R2	=	
R3	=	
r	=	

Pulverkammer

E	=	
P1 ¹⁾	=	12.22
P2	=	

Schulterkonus

alpha	=	
S	=	
r1 max	=	
r2	=	

Hülsenhals

H1	=	
H2 ¹⁾	=	12.20

Geschossübergang

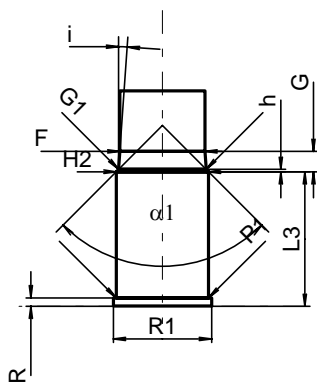
G1 ^{1)*}	=	11.58
G ^{1)*}	=	2.67
alpha1	=	90°
h*	=	0.31
s	=	
i ¹⁾	=	4°
w	=	

Lauf

F ^{1)*}	=	11.25
Z ¹⁾	=	11.48

Züge

b	=	3.78
N	=	5
u	=	500.00
Q	=	101.60 mm ²



Maßstab 1:1

Maße in << mm >>
Maße und Toleranzen für Messläufe
siehe Anhang CR 1.

Bemerkungen: 1) Kontrolle aus Sicherheitsgründen
* Grundmaße