

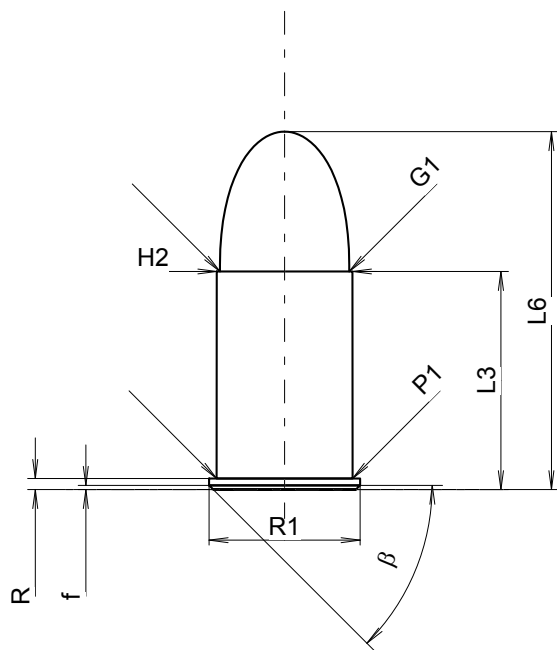
**C.I.P.****455 MK II**

TAB. IV

Datum 84-06-14

Revision 07-05-14

Ursprungsland: GB

**PATRONE MAXI****Längen**

L1	=	
L2	=	
L3 <sup>1)</sup>	=	19.50
L4	=	
L5	=	
L6	=	32.00

**Hülsenboden**

R <sup>1)</sup>	=	1.00	-0.25
R1	=	13.50	
R3	=		
E	=		
E1	=		
e min	=		
delta	=		
f	=	0.38	
beta	=	45°	

**Pulverkammer**

P1	=	12.15
P2	=	

**Schulterkonus**

alpha	=	
S	=	
r1 min	=	
r2	=	

**Hülsenhals**

H1	=	
H2 <sup>1)</sup>	=	12.14

**Geschoss**

G1 <sup>1)</sup>	=	11.57
G2	=	
F	=	
L3+G <sup>1)</sup>	=	23.15

**Drücke (Energien)****Mech. elektr. Wandler**

Pmax	=	900 bar
PK	=	1035 bar
PE	=	1170 bar
M	=	7.50

**Verschiedene Daten**

Fe <sup>1)4)</sup>	=	0.25
delta L	=	

**PATRONENLAGER MINI****Längen**

L1	=	
L2	=	
L3 <sup>1)</sup>	=	20.00

**Stoßboden**

R <sup>1)</sup>	=	1.00
R1	=	13.55
R2	=	
R3	=	
r	=	

**Pulverkammer**

E	=	
P1 <sup>1)</sup>	=	12.20
P2	=	

**Schulterkonus**

alpha	=	
S	=	
r1 max	=	
r2	=	

**Hülsenhals**

H1	=	
H2 <sup>1)</sup>	=	12.16

**Geschossübergang**

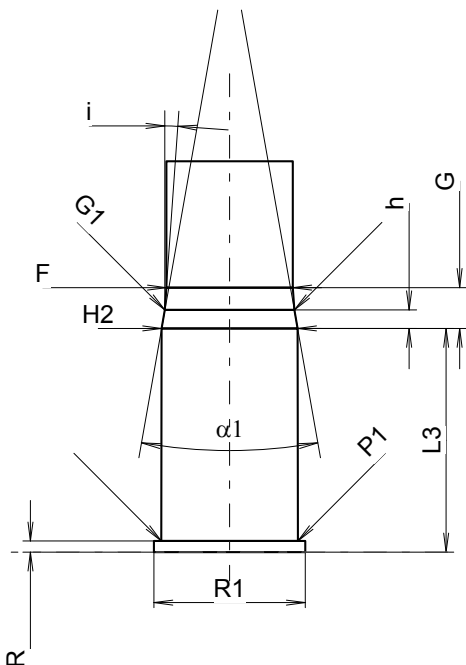
G1 <sup>1)</sup> *	=	11.58
G <sup>1)</sup> *	=	3.65
alpha1	=	20°
h*	=	1.65
s	=	
i <sup>1)</sup>	=	4°
w	=	

**Lauf**

F <sup>1)</sup> *	=	11.30
Z <sup>1)</sup>	=	11.55

**Züge**

b	=	3.80
N	=	7
u	=	500.00
Q	=	103.68 mm <sup>2</sup>



Maßstab 1.48:1

Maße in << mm >>  
Maße und Toleranzen für Messläufe  
siehe Anhang CR 1.

Bemerkungen: 1) Kontrolle aus Sicherheitsgründen  
4) Verschlussabstand an Rand  
\* Grundmaße