

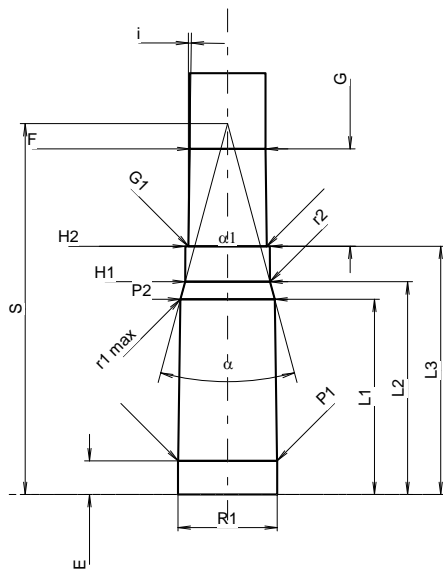
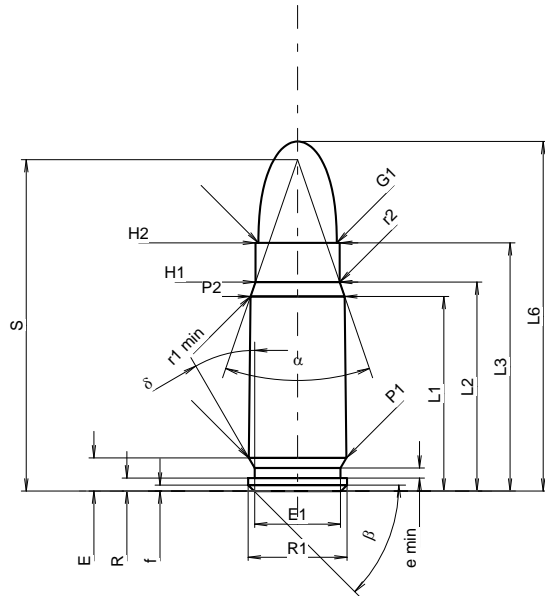
**C.I.P.****7,62 x 25 Tokarev**

TAB. IV

Datum 90-04-04

Revision 06-09-19

Ursprungsland: SU



Maßstab 1.31:1

Maße in << mm >>  
Maße und Toleranzen für Messläufe  
siehe Anhang CR 1.

**PATRONE MAXI****Längen**

L1 <sup>1)</sup> *	=	19.60	-0.20
L2 <sup>1)</sup> *	=	21.04	-0.20
L3 <sup>1)</sup>	=	25.00	
L4	=		
L5	=		
L6	=	35.20	

**Hülsenboden**

R	=	1.32	
R1	=	9.95	
R3	=		
E	=	3.34	
E1	=	8.65	
e min	=	1.00	
delta	=	30°	
f	=	0.60	
beta	=	45°	

**Pulverkammer**

P1	=	9.83	
P2 <sup>1)</sup> *	=	9.48	-0.20

**Schulterkonus**

alpha	=	38°	
S	=	33.37	
r1 min	=	0.50	
r2	=	2.00	

**Hülsenhals**

H1 *	=	8.49	
H2 <sup>1)</sup>	=	8.49	

**Geschoss**

G1 <sup>1)</sup>	=	7.90	
G2	=		
F	=		
L3+G <sup>1)</sup>	=	34.80	

**Drücke (Energien)****Mech. elektr. Wandler**

Pmax	=	2500 bar	
PK	=	2875 bar	
PE	=	3250 bar	
M	=	17.50	

**Verschiedene Daten**

Fe <sup>1)3)</sup>	=	0.20	
delta L	=		

**PATRONENLAGER MINI****Längen**

L1 *	=	19.65	
L2 *	=	21.42	
L3 <sup>1)</sup>	=	25.00	

**Stoßboden**

R	=	1.40	
R1	=	10.00	
R2	=		
R3	=		
r	=		

**Pulverkammer**

E	=	3.40	
P1 <sup>1)</sup>	=	9.95	
P2 *	=	9.50	

**Schulterkonus**

alpha <sup>1)</sup>	=	30°02'38"	
S	=	37.35	
r1 max	=	0.50	
r2	=	1.00	

**Hülsenhals**

H1 *	=	8.55	
H2 <sup>1)</sup>	=	8.50	

**Geschossübergang**

G1 <sup>1)</sup> *	=	7.90	
G <sup>1)</sup> *	=	9.80	
alpha 1	=	180°	
h	=		
s	=		
i <sup>1)</sup>	=	0°49'6"	
w	=		

**Lauf**

F <sup>1)</sup> *	=	7.62	
Z <sup>1)</sup>	=	7.92	

**Züge**

b	=	3.81	
N	=	4	
u	=	240.00	
Q	=	47.99	mm <sup>2</sup>

Bemerkungen: 1) Kontrolle aus Sicherheitsgründen  
3) Verschlussabstand an Schulter  
\* Grundmaße