

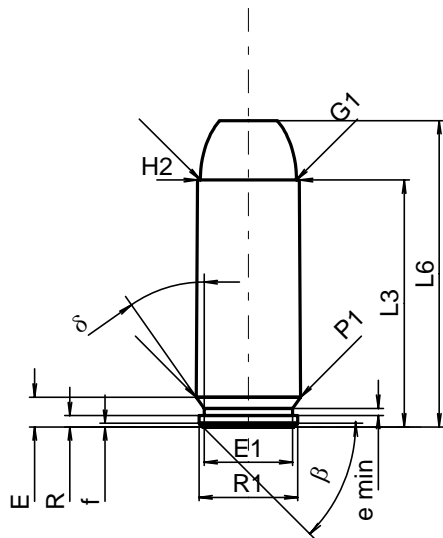
**C.I.P.****50 AE**

TAB. IV

Datum 91-10-18

Revision 00-06-07

Ursprungsland: IL

**PATRONE MAXI****Längen**

L1	=		
L2	=		
L3 <sup>1)</sup>	=	32.64	-0.25
L4	=		
L5	=		
L6	=	40.50	

**Hülsenboden**

R	=	1.50	
R1	=	13.06	
R3	=		
E	=	3.94	
E1	=	11.70	
e min	=	0.95	
delta	=	35°	
f	=	0.50	
beta	=	45°	

**Pulverkammer**

P1	=	13.79	
P2	=		

**Schulterkonus**

alpha	=		
S	=		
r1 min	=		
r2	=		

**Hülsenhals**

H1	=		
H2 <sup>1)</sup>	=	13.50	

**Geschoss**

G1 <sup>1)</sup>	=	12.71	
G2	=		
F	=		
L3+G <sup>1)</sup>	=	36.19	

**Drücke (Energien)****Mech. elektr. Wandler**

Pmax	=	2300 bar	
PK	=	2645 bar	
PE	=	2990 bar	
M	=	10.50	

**Verschiedene Daten**

Fe <sup>1)</sup>	=	0.30	
delta L	=		

**PATRONENLAGER MINI****Längen**

L1	=		
L2	=		
L3 <sup>1)</sup>	=	32.64	

**Stoßboden**

R	=		
R1	=	13.96	
R2	=		
R3	=		
r	=		

**Pulverkammer**

E	=	5.14	
P1 <sup>1)</sup>	=	13.89	
P2	=		

**Schulterkonus**

alpha	=		
S	=		
r1 max	=		
r2	=		

**Hülsenhals**

H1	=		
H2 <sup>1)</sup>	=	13.52	

**Geschossübergang**

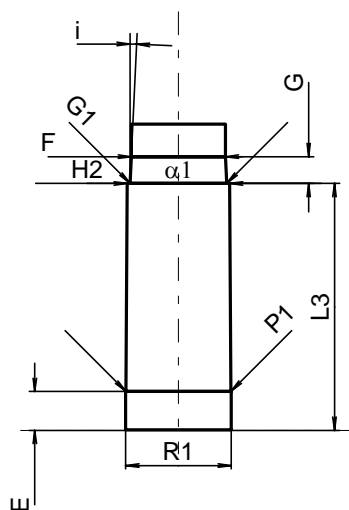
G1 <sup>1)*</sup>	=	12.75	
G <sup>1)</sup>	=	3.55	
alpha1 <sup>*</sup>	=	180°	
h	=		
s	=		
i <sup>1)*</sup>	=	2°35'	
w	=		

**Lauf**

F <sup>1)*</sup>	=	12.43	
Z <sup>1)</sup>	=	12.73	

**Züge**

b	=	3.43	
N	=	6	
u	=	482.60	
Q	=	124.29	mm <sup>2</sup>



Maßstab 1:1

Maße in << mm >>  
Maße und Toleranzen für Messläufe  
siehe Anhang CR 1.

Bemerkungen: 1) Kontrolle aus Sicherheitsgründen  
\* Grundmaße