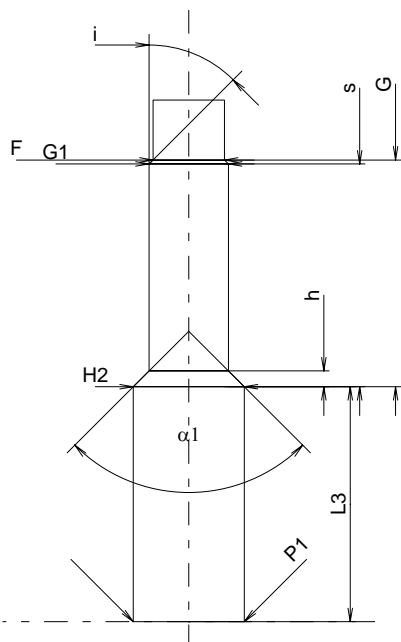
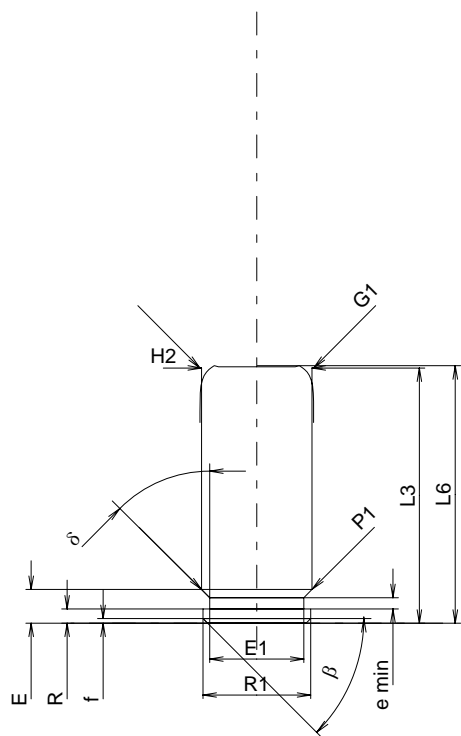


# C.I.P.

# 10 x 22 T

**TAB. IV**
**Date 00-12-11**
**Revision 04-09-27**

Country of Origin: IT



Scale 1.5:1

**CARTRIDGE MAXI**
**Lengths**

L1	=		
L2 *	=	22.00	
L3 <sup>1)</sup>	=	22.50	-0.25
L4	=		
L5	=		
L6	=	22.70	

**Case Head**

R	=	1.25	
R1	=	9.50	
R3	=		
E	=	2.97	
E1	=	8.30	
e min	=	1.00	
$\delta$	=	40°	
f	=	0.40	
$\beta$	=	45°	

**Powder Chamber**

P1	=	9.75	
P2	=		

**Junction Cone**

$\alpha$	=		
S	=		
r1 min	=		
r2	=		

**Collar**

H1	=		
H2 <sup>1)</sup>	=	9.75	

**Projectile**

G1 <sup>1)</sup>	=	10.00	
G2	=		
F	=		
L3+G <sup>1)</sup>	=	42.50	

**Pressures (Energies)**
**Method Transducer**

Pmax	=	450 bar	
PK	=	518 bar	
PE	=	585 bar	
M	=	12.50	

**Miscellaneous Dimensions**

Fe	=	0.30	
delta L	=		

**CHAMBER MINI**
**Lengths**

L1	=		
L2	=		
L3 <sup>1)</sup>	=	20.70	

**Breech**

R	=		
R1	=		
R2	=		
R3	=		
r	=		

**Powder Chamber**

E	=		
P1 <sup>1)</sup>	=	9.80	
P2	=		

**Junction Cone**

$\alpha$	=		
S	=		
r1 max	=		
r2	=		

**Collar**

H1	=		
H2 <sup>1)</sup>	=	9.80	

**Commencement of Rifling**

G1 <sup>1)*</sup>	=	7.00	
G <sup>1)*</sup>	=	20.00	
$\alpha_1$	=	90°	
h	=	1.40	
s *	=	19.65	
i <sup>1)</sup>	=	45°	
w	=		

**Barrel**

F <sup>1)*</sup>	=	6.30	
Z	=		

**Grooves**

b	=		
N	=		
u	=		
Q	=	31.17	mm <sup>2</sup>

Dimensions in << mm >>  
Dimensions and Tolerances for Proof Barrels  
see Appendix CR 1.

Notes: 1) Check for safety reasons  
\* Basic dimensions